

**CORRECTIVE SERVICES**

AUSTRALIA

EMBARGO: 11.30AM (CANBERRA TIME) THURS 25 NOV 2010

C O N T E N T S

	<i>page</i>
Notes	2
Summary of findings	3

T A B L E S

1 Persons in corrective services, summary	9
2 Persons in full-time custody	11
3 Imprisonment rates	12
4 Persons in full-time custody, by sex	13
5 Imprisonment rates, by sex	14
6 Persons in full-time custody, by type of custody	15
7 Imprisonment rates, by type of custody	16
8 Persons in full-time custody, by legal status	17
9 Imprisonment rates, by legal status	18
10 Sentenced prisoner receptions into full-time custody	19
11 Persons in periodic detention, by sex	20
12 Federal sentenced persons in full-time custody, by sex	21
13 Aboriginal and Torres Strait Islander persons in full-time custody, by sex ..	22
14 Aboriginal and Torres Strait Islander imprisonment rates, by sex	23
15 Aboriginal and Torres Strait Islander persons in full-time custody, by legal status	24
16 Aboriginal and Torres Strait Islander imprisonment rates, by legal status ..	25
17 Persons in community-based corrections, by sex	26
18 Community-based corrections rates, by sex	27
19 Persons in community-based corrections, by type of order	28

I N Q U I R I E S

For further information about these and related statistics, contact the National Information and Referral Service on 1300 135 070 or Paul Romanis on Melbourne (03) 9615 7362.

A D D I T I O N A L I N F O R M A T I O N

Explanatory Notes	30
Appendix Experimental Community-Based Corrections Data	38
Glossary	42

NOTES

FORTHCOMING ISSUES

<i>ISSUE (Quarter)</i>	<i>RELEASE DATE</i>
December 2010	17 March 2011
Mar 2011	15 June 2011

ABOUT THIS PUBLICATION

This publication presents information on persons in custody and community-based corrections. The statistics are derived from information provided to the Australian Bureau of Statistics (ABS) from administrative records held by corrective services agencies in each state and territory, and from the Australian Government Attorney-General's Department for details on federal prisoners. Details are provided for each state and territory on: prisoner numbers and imprisonment rates by type of custody; prisoner numbers by legal status for all prisoners and for Aboriginal and Torres Strait Islander prisoners; the number of sentenced receptions into custody; the number of federal prisoners; and the numbers and rates of persons serving community-based corrections orders. Experimental data on the Aboriginal and Torres Strait Islander status of persons in community-based corrections are also included in the Appendix.

The ABS acknowledges the valuable contribution of the Board of Management and the Advisory Group of the National Corrective Services Statistics Unit as well as the staff of the various agencies that provide the statistics that are presented in this publication.

FURTHER INFORMATION

More information about ABS activities in the field of crime and justice statistics is available from the Crime and Justice theme page on the ABS website <www.abs.gov.au>. Details of other ABS publications relating to Crime and Justice statistics can be found in paragraphs 46-48 of the Explanatory Notes.

ABBREVIATIONS

- ABS Australian Bureau of Statistics
- ACT Australian Capital Territory
- Aust. Australia
- ERP estimated resident population
- NCCJS National Centre for Crime and Justice Statistics, Australian Bureau of Statistics
- NSW New South Wales
- NT Northern Territory
- Qld Queensland
- SA South Australia
- Tas. Tasmania
- Vic. Victoria
- WA Western Australia

Brian Pink
Australian Statistician

SUMMARY OF FINDINGS

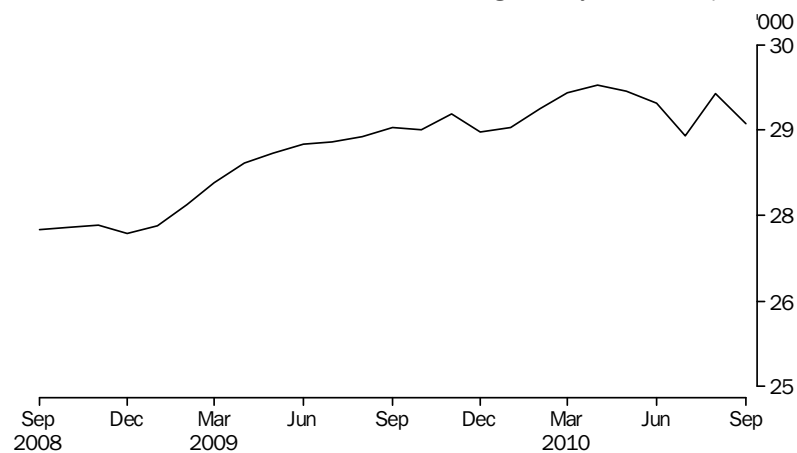
PERSONS IN CORRECTIVE SERVICES

Based on first day of the month averages, for the September quarter 2010, there were 85,470 persons under the authority of corrective services (excluding those in periodic detention). The total comprised 28,924 persons in full-time custody and 56,546 persons in community-based corrections. This represents no change from the September quarter 2009. Over the same period, persons in full-time custody increased by 1% and persons in community-based corrections decreased by 1% (both 296 persons).

Number of prisoners

During the September quarter 2010, the average daily number of full-time prisoners in Australia was 28,843 persons. This was an decrease of 2% from the June quarter 2010, and a 1% increase from the September quarter 2009.

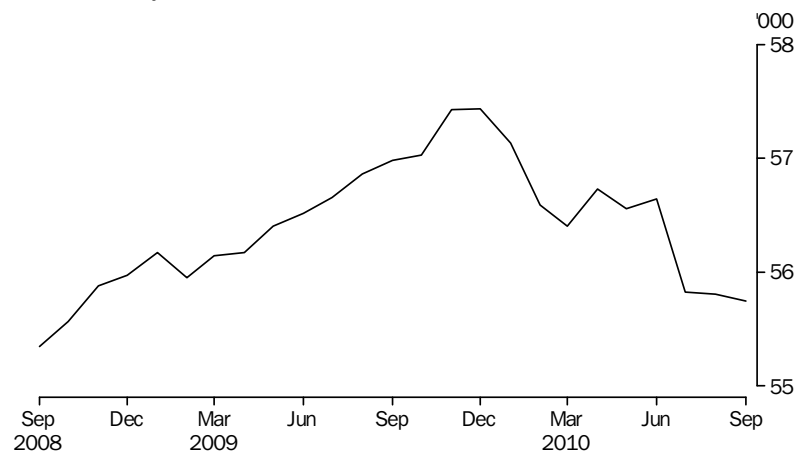
PERSONS IN PRISON CUSTODY, Average daily number per month



Number of persons in community-based corrections

Community-based corrections orders are non-custodial orders served under the authority of adult corrective services agencies and include restricted movement, reparations (fine options and community service) and supervision orders (parole, bail, and sentenced probation). In the September quarter 2010, there were 56,546 persons in community-based corrections in Australia based on first day of the month averages, a decrease of less than 1% (95 persons) from the June quarter 2010.

PERSONS IN COMMUNITY-BASED CORRECTIONS, Average number on the first day of the month



SUMMARY OF FINDINGS *continued*

PERSONS IN CUSTODY

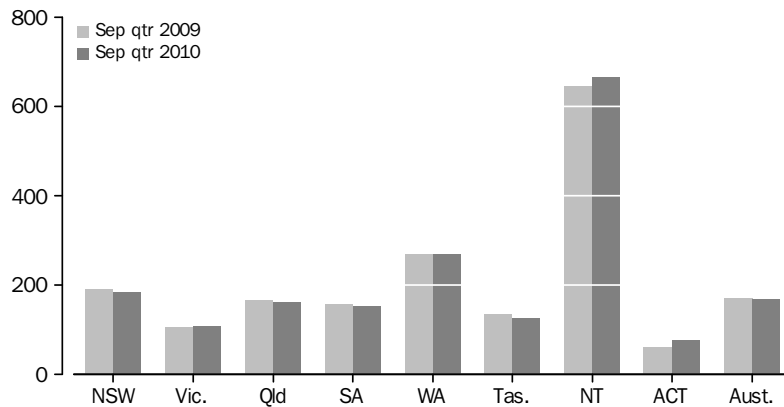
Rates per 100,000 adults

Nationally, the September quarter 2010 average daily imprisonment rate was 168 prisoners per 100,000 adult population, a decrease of 2% from the September quarter 2009. The Northern Territory had the highest imprisonment rate (665 prisoners per 100,000 adult population), followed by Western Australia (268) and New South Wales (183).

The Australian Capital Territory and Victoria had the lowest imprisonment rates (76 and 107 prisoners per 100,000 adult population respectively).

The Australian Capital Territory recorded the largest proportional increase in imprisonment rates from the September quarter 2009 (27%). The largest proportional decrease over the same period was recorded in Tasmania (5%).

AVERAGE DAILY IMPRISONMENT RATE(a), By states and territories



(a) Rate per 100,000 adult population.

Sex

Of the average daily number of full-time prisoners in Australia in the September quarter 2010, 26,723 (93%) were male and 2,120 (7%) were female. The average daily imprisonment rate for males was 314 prisoners per 100,000 adult male population; 13 times more than the rate for females (24 female prisoners per 100,000 adult female population).

Type of full-time custody

The average daily number of prisoners in secure prison custody in the September quarter 2010 was 22,557 (78% of prisoners in full-time custody). Open prison custody comprised 6,287 prisoners (22%).

All prisoners in the Australian Capital Territory are in secure prison custody. Queensland, South Australia and Tasmania had the next highest proportions of prisoners in secure custody with 90% each; followed by Victoria (89%).

Legal status

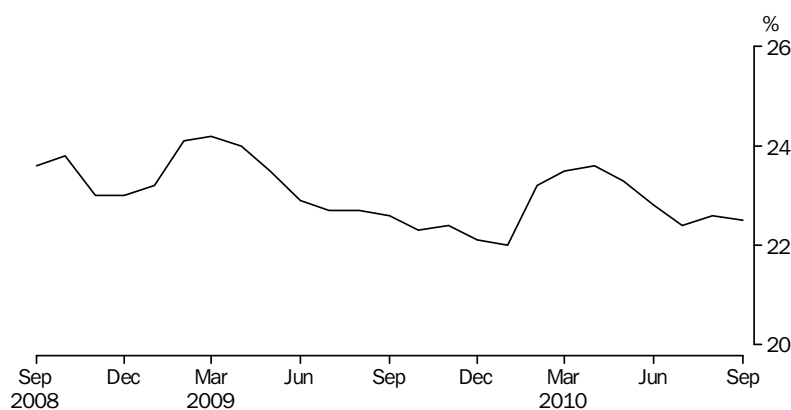
The average number of prisoners in full-time custody on the first day of each month in the September quarter 2010 was 28,924, comprising an average of 22,487 (78%) sentenced and 6,437 (22%) unsentenced prisoners. Sentenced prisoners decreased by less than 1% from the previous quarter and increased by 2% from the September quarter 2009.

SUMMARY OF FINDINGS *continued*

Legal status continued

Unsentenced prisoners decreased by 6% from the previous quarter and by 1% from the September quarter 2009. The Australian Capital Territory and South Australia had the highest proportions of unsentenced prisoners (37% and 34% respectively). The lowest proportions of unsentenced prisoners were recorded in Victoria and Western Australia (18% and 16% respectively).

PROPORTION OF UNSENTENCED PERSONS IN PRISON CUSTODY (a), Per month



(a) Based on average number on the first day of the month

Sentenced prisoner receptions

There were 7,820 sentenced prisoner receptions into full-time custody in Australia in the September quarter 2010; an increase of 5% (393) from the June quarter 2010 and an increase of 1% (111) from the September quarter 2009.

Periodic detention

Periodic detention is a form of custody or order where a sentenced prisoner is required to be held in custody on a part-time basis. This type of custody order is currently only used in New South Wales and the Australian Capital Territory. This program has ceased in New South Wales from October 2010.

During the September quarter 2010 there was an average daily number of 668 persons in New South Wales and 53 persons in the Australian Capital Territory held in periodic detention. The rate of imprisonment for periodic detainees decreased by 14% in New South Wales, and by 2% in the Australian Capital Territory from the June quarter 2010.

Federal prisoners

In the September quarter 2010, there were 804 federal sentenced prisoners in Australia based on first day of the month figures, an increase of 9% from the September quarter 2009. Just over half (411) of the federal prisoners were sentenced in New South Wales.

Aboriginal and Torres Strait Islander prisoners

The average daily number of full-time Aboriginal and Torres Strait Islander adult prisoners in Australia in the September quarter 2010 was 7,467, comprising 6,835 (92%) males and 633 (8%) females. Aboriginal and Torres Strait Islander prisoners represented 26% of the total full-time prisoner population in the September quarter 2010, decreasing by 2% from the June quarter 2010. The total Aboriginal and Torres Strait Islander population aged 18 years and over at 31 December 2010 was 2% of the Australian population.

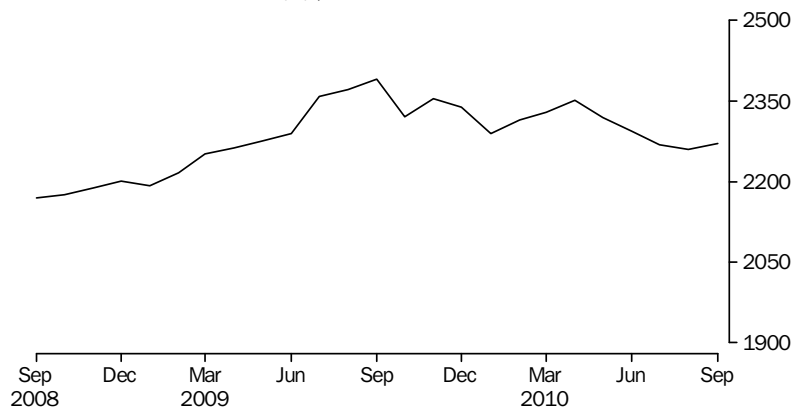
SUMMARY OF FINDINGS *continued*

Aboriginal and Torres Strait Islander prisoners continued

Nearly 77% of the total Aboriginal and Torres Strait Islander prisoner population was located in the states of New South Wales (2,244), Western Australia (1,818) and Queensland (1,670).

The national average daily Aboriginal and Torres Strait Islander imprisonment rate in the September quarter 2010 was 2,267 per 100,000 adult Aboriginal and Torres Strait Islander population, a decrease of 2% from both the previous quarter and from the September quarter 2009.

AVERAGE DAILY ABORIGINAL AND TORRES STRAIT ISLANDER IMPRISONMENT RATE (a), Per month



(a) Rate per 100,000 adult Aboriginal and Torres Strait Islander population.

Different age profiles of the Aboriginal and Torres Strait Islander and non-Indigenous population can affect the imprisonment rate numbers. The quarterly collection is unable to take age into account; however, data from the Prisoner Census collection can provide this level of detail.

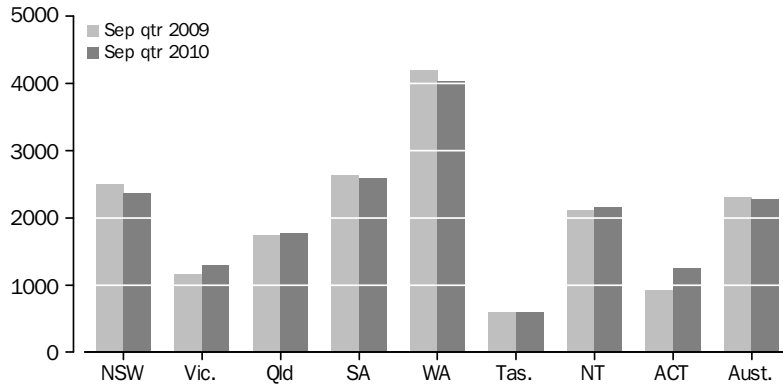
The national age standardised Aboriginal and Torres Strait Islander imprisonment rate from the annual Prisoner Census conducted at September 2009 was 14 times higher (1,891 per 100,000 adult Aboriginal and Torres Strait Islander population) than the rate for non-Indigenous persons (136 per 100,000 adult non-Indigenous population). Further information on the comparison of imprisonment rates between Aboriginal and Torres Strait Islander and non-Indigenous populations can be found in *Prisoners in Australia, 2009* (cat.no.4517.0).

The highest Aboriginal and Torres Strait Islander imprisonment rate was recorded in Western Australia (4,021 Aboriginal and Torres Strait Islander prisoners per 100,000 adult Aboriginal and Torres Strait Islander population), followed by South Australia (2,581) and New South Wales (2,372). The lowest Aboriginal and Torres Strait Islander imprisonment rate was recorded in Tasmania (586), followed by the Australian Capital Territory (1,247).

SUMMARY OF FINDINGS *continued*

Aboriginal and Torres
Strait Islander prisoners
continued

AVERAGE DAILY ABORIGINAL AND TORRES STRAIT ISLANDER IMPRISONMENT RATE(a), By states and territories



(a) Rate per 100,000 adult Aboriginal and Torres Strait Islander population.

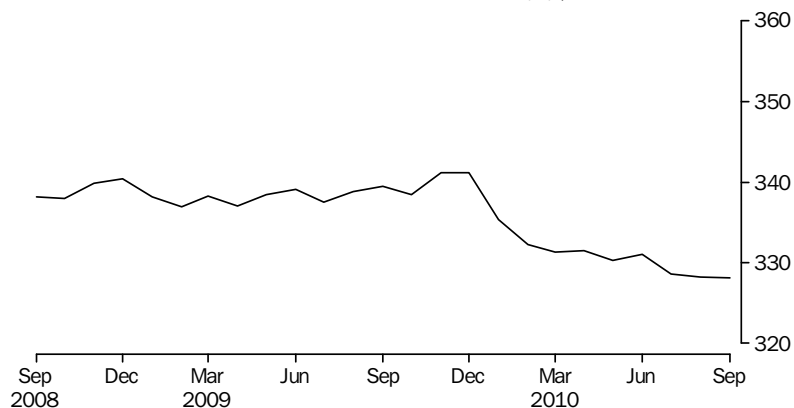
The largest proportional increase in the Aboriginal and Torres Strait Islander imprisonment rate from the September quarter 2009 was recorded in the Australian Capital Territory (37%), followed by Victoria (11%). New South Wales (5%), Western Australia (4%) and South Australia (2%) recorded the largest proportional decreases over the same period.

PERSONS IN COMMUNITY-BASED CORRECTIONS

Rates per 100,000 adults

Nationally, the rate of persons in community-based corrections was 328 persons per 100,000 adult population for the September quarter 2010 based on first day of the month figures. This was a decrease of 3% from the September quarter 2009 (339 persons per 100,000 adults). The largest decrease from the September quarter 2009 was recorded in Western Australia (14%), while the largest increase was recorded in Tasmania (15%).

COMMUNITY-BASED CORRECTIONS RATE(a), Per month

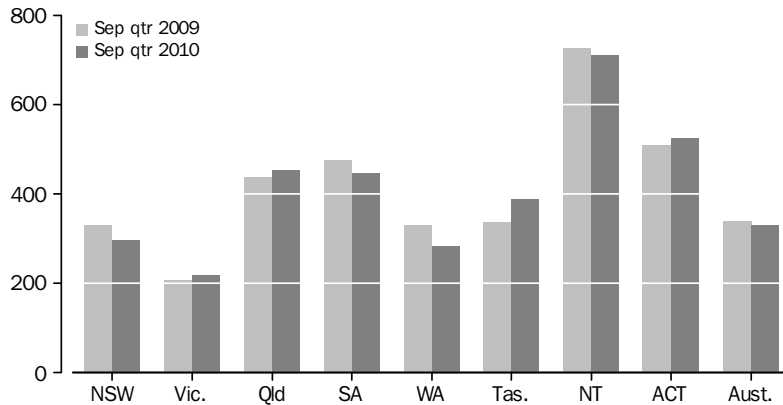


(a) Rate per 100,000 adult population, based on average number on the first day of the month

SUMMARY OF FINDINGS *continued*

*Rates per 100,000 adults
continued*

COMMUNITY-BASED CORRECTIONS RATE(a), By states and territories



(a) Rate per 100,000 adult population, based on average number on the first day of the month

Sex

Of the average number of persons in community-based corrections in Australia in the September quarter 2010, 46,127 (82%) were male and 10,354 (18%) were female.

In the September quarter 2010, the rate of community-based corrections for males was 543 per 100,000 adult male population compared to 119 females per 100,000 adult female population. The community-based corrections rate for males was more than four times that of females.

Type of orders

In the September quarter 2010, there were 11,953 persons on parole following a period of imprisonment, an increase of less than 1% from the June quarter 2010. Three states accounted for over 80% of persons serving parole orders: New South Wales (4,255 or 36%), Queensland (4,312 persons or 36%), and Victoria (1,530 or 13%). The largest proportional decrease in parole orders from the June quarter 2010 was recorded in Western Australia (9%).

For this same period, there were 34,229 persons under sentenced probation and 10,188 persons serving community service orders; a decrease of less than 1% and 3% from the June quarter 2010, respectively.

PERSONS IN CORRECTIVE SERVICES, Summary(a)

	NSW	Vic.	Qld	SA	WA	Tas.	NT	ACT	Aust.
AVERAGE DAILY NUMBER									
Males in full-time custody									
Sep Qtr 09	9 613	4 113	5 191	1 856	4 206	471	991	149	26 590
Jun Qtr 10	9 630	4 232	5 271	1 841	4 428	437	1 061	200	27 101
Sep Qtr 10	9 459	4 260	5 158	1 841	4 294	459	1 052	200	26 723
Females in full-time custody									
Sep Qtr 09	774	296	415	127	366	42	46	14	2 080
Jun Qtr 10	787	317	451	122	404	39	48	20	2 188
Sep Qtr 10	754	318	432	127	397	32	48	12	2 120
Persons in full-time custody									
Sep Qtr 09	10 387	4 409	5 606	1 983	4 571	513	1 037	163	28 670
Jun Qtr 10	10 417	4 549	5 723	1 963	4 832	476	1 109	220	29 289
Sep Qtr 10	10 213	4 578	5 590	1 968	4 691	491	1 100	212	28 843
Aboriginal & Torres Strait Islander persons in full-time custody									
Sep Qtr 09	2 292	243	1 581	454	1 844	67	850	25	7 355
Jun Qtr 10	2 310	286	1 676	455	1 909	67	908	36	7 647
Sep Qtr 10	2 244	279	1 670	460	1 818	69	893	35	7 467
AVERAGE NUMBER ON FIRST DAY OF MONTH									
Unsentenced persons in full-time custody									
Sep Qtr 09	2 707	844	1 137	691	710	112	240	59	6 500
Jun Qtr 10	2 778	861	1 215	715	829	99	238	92	6 826
Sep Qtr 10	2 591	812	1 160	676	765	108	245	79	6 437
Sentenced persons in full-time custody									
Sep Qtr 09	7 692	3 546	4 475	1 301	3 821	403	798	103	22 138
Jun Qtr 10	7 648	3 700	4 534	1 264	4 010	378	875	124	22 535
Sep Qtr 10	7 645	3 755	4 441	1 308	3 969	383	852	134	22 487
Persons in full-time custody									
Sep Qtr 09	10 399	4 390	5 611	1 992	4 531	516	1 038	162	28 638
Jun Qtr 10	10 426	4 561	5 749	1 980	4 839	477	1 113	216	29 361
Sep Qtr 10	10 235	4 567	5 601	1 984	4 734	491	1 097	213	28 924
Males in community-based corrections^(b)									
Sep Qtr 09	15 066	7 137	11 739	4 886	4 364	1 034	1 013	1 163	46 401
Jun Qtr 10	14 423	7 454	12 306	4 621	3 987	1 181	r996	1 220	r46 188
Sep Qtr 10	13 924	7 751	12 535	4 638	3 812	1 215	1 020	1 233	46 127
Females in community-based corrections^(b)									
Sep Qtr 09	2 819	1 546	3 004	1 122	1 212	257	154	224	10 337
Jun Qtr 10	2 642	1 651	3 082	1 094	1 230	297	r160	232	10 388
Sep Qtr 10	2 566	1 683	3 179	1 091	1 154	295	156	230	10 354
Persons in community-based corrections^{(b)(c)}									
Sep Qtr 09	17 966	8 685	14 742	6 008	5 585	1 291	1 167	1 387	56 832
Jun Qtr 10	17 127	9 108	15 388	5 715	5 217	1 478	r1 156	1 452	r56 641
Sep Qtr 10	16 549	9 438	15 714	5 731	4 966	1 509	1 176	1 463	56 546

r revised

(a) For the calculation of quarterly figures – see Explanatory Notes, paragraph 5.

(b) Figures include persons with breached or suspended orders, with the exception of Vic. and Tas.

(c) Includes persons whose sex is unknown.

	NSW	Vic.	Qld	SA	WA	Tas.	NT	ACT	Aust.
PERCENTAGE CHANGE (AVERAGE DAILY NUMBER)									
Males in full-time custody									
Sep Qtr 09 to Sep Qtr 10	-1.6	3.6	-0.6	-0.8	2.1	-2.5	6.2	34.2	0.5
Jun Qtr 10 to Sep Qtr 10	-1.8	0.7	-2.1	—	-3.0	5.0	-0.8	—	-1.4
Females in full-time custody									
Sep Qtr 09 to Sep Qtr 10	-2.6	7.4	4.1	—	8.5	-23.8	4.3	-14.3	1.9
Jun Qtr 10 to Sep Qtr 10	-4.2	0.3	-4.2	4.1	-1.7	-17.9	—	-40.0	-3.1
Persons in full-time custody									
Sep Qtr 09 to Sep Qtr 10	-1.7	3.8	-0.3	-0.8	2.6	-4.3	6.1	30.1	0.6
Jun Qtr 10 to Sep Qtr 10	-2.0	0.6	-2.3	0.3	-2.9	3.2	-0.8	-3.6	-1.5
Aboriginal & Torres Strait Islander persons in full-time custody									
Sep Qtr 09 to Sep Qtr 10	-2.1	14.8	5.6	1.3	-1.4	3.0	5.1	40.0	1.5
Jun Qtr 10 to Sep Qtr 10	-2.9	-2.4	-0.4	1.1	-4.8	3.0	-1.7	-2.8	-2.4
PERCENTAGE CHANGE (AVERAGE NUMBER ON FIRST DAY OF MONTH)									
Unsentenced persons in full-time custody									
Sep Qtr 09 to Sep Qtr 10	-4.3	-3.8	2.0	-2.2	7.7	-3.6	2.1	33.9	-1.0
Jun Qtr 10 to Sep Qtr 10	-6.7	-5.7	-4.5	-5.5	-7.7	9.1	2.9	-14.1	-5.7
Sentenced persons in full-time custody									
Sep Qtr 09 to Sep Qtr 10	-0.6	5.9	-0.8	0.5	3.9	-5.0	6.8	30.1	1.6
Jun Qtr 10 to Sep Qtr 10	—	1.5	-2.1	3.5	-1.0	1.3	-2.6	8.1	-0.2
Persons in full-time custody									
Sep Qtr 09 to Sep Qtr 10	-1.6	4.0	-0.2	-0.4	4.5	-4.8	5.7	31.5	1.0
Jun Qtr 10 to Sep Qtr 10	-1.8	0.1	-2.6	0.2	-2.2	2.9	-1.4	-1.4	-1.5
Males in community-based corrections(b)									
Sep Qtr 09 to Sep Qtr 10	-7.6	8.6	6.8	-5.1	-12.6	17.5	0.7	6.0	-0.6
Jun Qtr 10 to Sep Qtr 10	-3.5	4.0	1.9	0.4	-4.4	2.9	2.4	1.1	-0.1
Females in community-based corrections(b)									
Sep Qtr 09 to Sep Qtr 10	-9.0	8.9	5.8	-2.8	-4.8	14.8	1.3	2.7	0.2
Jun Qtr 10 to Sep Qtr 10	-2.9	1.9	3.1	-0.3	-6.2	-0.7	-2.5	-0.9	-0.3
Persons in community-based corrections(b)(c)									
Sep Qtr 09 to Sep Qtr 10	-7.9	8.7	6.6	-4.6	-11.1	16.9	0.8	5.5	-0.5
Jun Qtr 10 to Sep Qtr 10	-3.4	3.6	2.1	0.3	-4.8	2.1	1.7	0.8	-0.2

— nil or rounded to zero (including null cells)

(a) For the calculation of quarterly figures – see Explanatory Notes, paragraph 5.

(b) Figures include persons with breached or suspended orders, with the exception of Vic. and Tas.

(c) Includes persons whose sex is unknown.

PERSONS IN FULL-TIME CUSTODY

	NSW(a)	Vic.	Qld(b)	SA	WA	Tas.	NT	ACT(c)	Aust.(d)
AVERAGE DAILY NUMBER									
2007	9 576	4 144	5 571	1 776	3 774	537	856	172	26 305
2008	9 804	4 240	5 549	1 908	3 824	526	939	179	26 885
2009	10 310	4 367	5 622	1 951	4 402	513	1 073	170	28 390
2009									
Sep Qtr	10 387	4 409	5 606	1 983	4 571	513	1 037	163	28 670
Dec Qtr	10 304	4 507	5 537	1 944	4 781	498	1 074	177	28 822
2010									
Mar Qtr	10 312	4 504	5 655	1 949	4 855	471	1 109	194	29 049
Jun Qtr	10 417	4 549	5 723	1 963	4 832	476	1 109	220	29 289
Sep Qtr	10 213	4 578	5 590	1 968	4 691	491	1 100	212	28 843
2009									
Jul	10 407	4 361	5 661	1 950	4 476	524	1 039	158	28 576
Aug	10 358	4 399	5 596	2 001	4 585	512	1 036	164	28 652
Sep	10 397	4 470	5 561	1 998	4 655	502	1 037	167	28 787
Oct	10 366	4 478	5 492	1 947	4 738	515	1 051	169	28 757
Nov	10 340	4 528	5 574	1 962	4 807	506	1 088	181	28 986
Dec	10 207	4 516	5 545	1 925	4 799	473	1 083	181	28 728
2010									
Jan	10 255	4 457	5 563	1 946	4 820	451	1 120	182	28 793
Feb	10 325	4 496	5 644	1 944	4 866	481	1 108	198	29 062
Mar	10 357	4 558	5 758	1 956	4 879	483	1 100	203	29 294
Apr	10 442	4 571	5 758	1 966	4 864	472	1 114	219	29 406
May	10 428	4 548	5 738	1 964	4 834	479	1 108	221	29 320
Jun	10 382	4 527	5 671	1 960	4 798	477	1 105	220	29 140
Jul	10 278	4 554	5 595	1 966	4 724	492	1 088	211	28 907
Aug	10 197	4 573	5 585	1 967	4 708	487	1 093	212	28 822
Sep	10 163	4 609	5 589	1 972	4 639	495	1 120	213	28 800

- (a) Data prior to the September quarter 2009 includes ACT prisoners held in NSW prisons. From the September quarter 2009 ACT prisoners are no longer held in NSW prisons – see Explanatory Notes, paragraph 38.
- (b) Data prior to the September quarter 2007 may be slightly overstated – see Explanatory Notes, paragraph 31.
- (c) Data prior to the September quarter 2009 includes ACT prisoners held in ACT as well as ACT prisoners that were held in NSW – see Explanatory Notes, paragraph 38.
- (d) For the period prior to the September quarter 2009, ACT Prisoners held in NSW prisons are included in both NSW and ACT figures. The sum of the state/territory columns will therefore be greater than the Australian total – see Explanatory Notes, paragraph 38.

IMPRISONMENT RATES (a)

	NSW(b)	Vic.	Qld(c)	SA	WA	Tas.	NT	ACT(d)	Aust.(c)
RATE PER 100,000 ADULT POPULATION									
2007	180.1	104.0	175.0	144.9	238.2	143.4	566.5	66.3	164.2
2008	182.6	104.4	169.9	153.5	234.9	138.9	601.6	67.5	164.7
2009	189.4	104.8	167.2	154.7	260.7	134.2	670.3	62.7	169.7
2009									
Sep Qtr	190.6	105.4	166.1	156.9	269.5	133.7	646.0	60.0	170.8
Dec Qtr	188.2	107.1	163.0	153.4	280.1	129.5	662.3	64.9	170.8
2010									
Mar Qtr	186.5	106.0	164.6	152.9	281.1	122.1	676.4	70.7	170.5
Jun Qtr	187.5	106.5	165.7	153.5	278.3	123.0	672.9	79.7	171.1
Sep Qtr	182.9	106.5	160.9	153.2	268.2	126.5	664.5	76.2	167.5
2009									
Jul	190.9	104.2	167.7	154.3	263.9	136.7	647.2	58.1	170.2
Aug	190.0	105.2	165.8	158.4	270.3	133.5	644.9	60.5	170.7
Sep	190.7	106.9	164.7	158.1	274.5	130.8	645.8	61.6	171.5
Oct	189.4	106.4	161.6	153.6	277.6	134.0	648.1	61.9	170.4
Nov	188.9	107.6	164.1	154.7	281.6	131.6	670.9	66.5	171.8
Dec	186.5	107.3	163.2	151.8	281.2	123.0	668.1	66.2	170.3
2010									
Jan	185.4	104.8	161.9	152.7	279.2	116.8	682.8	66.2	169.0
Feb	186.7	105.8	164.3	152.5	281.8	124.6	675.7	71.9	170.5
Mar	187.3	107.2	167.6	153.5	282.5	125.1	670.7	74.0	171.9
Apr	188.0	107.0	166.7	153.7	280.2	121.9	676.1	79.3	171.7
May	187.7	106.5	166.2	153.6	278.5	123.7	672.1	80.0	171.2
Jun	186.9	106.0	164.2	153.3	276.4	123.3	670.6	79.8	170.2
Jul	184.0	105.9	161.0	153.0	270.1	126.6	657.0	75.9	167.8
Aug	182.6	106.4	160.7	153.1	269.2	125.4	660.2	76.3	167.3
Sep	182.0	107.2	160.8	153.5	265.2	127.6	676.6	76.5	167.2

- (a) Imprisonment rates are based on Estimated Resident Population counts – see Explanatory Notes, paragraphs 17–21.
- (b) Excludes ACT prisoners that were held in NSW prisons prior to September quarter 2009.
- (c) Data prior to the September quarter 2007 may be slightly overstated – see Explanatory Notes, paragraph 31.
- (d) Includes ACT prisoners held in ACT as well as ACT prisoners that were held in NSW prior to the September quarter 2009 – see Explanatory Notes, paragraph 39.

PERSONS IN FULL-TIME CUSTODY, By sex

	NSW(a)	Vic.	Qld(b)	SA	WA	Tas.	NT	ACT(c)	Aust.(b)(d)
MALES (AVERAGE DAILY NUMBER)									
2007	8 867	3 894	5 151	1 658	3 459	502	817	162	24 415
2008	9 078	3 997	5 122	1 782	3 538	489	895	163	24 986
2009	9 537	4 081	5 199	1 823	4 055	475	1 026	155	26 336
2009									
Sep Qtr	9 613	4 113	5 191	1 856	4 206	471	991	149	26 590
Dec Qtr	9 528	4 193	5 118	1 821	4 398	456	1 028	164	26 704
2010									
Mar Qtr	9 539	4 186	5 223	1 822	4 463	438	1 058	181	26 909
Jun Qtr	9 630	4 232	5 271	1 841	4 428	437	1 061	200	27 101
Sep Qtr	9 459	4 260	5 158	1 841	4 294	459	1 052	200	26 723
Jul	9 512	4 238	5 157	1 840	4 325	455	1 039	196	26 763
Aug	9 449	4 255	5 159	1 842	4 305	457	1 047	201	26 717
Sep	9 416	4 288	5 157	1 842	4 249	464	1 071	202	26 690
FEMALES (AVERAGE DAILY NUMBER)									
2007	709	249	419	118	315	35	39	11	1 890
2008	726	243	427	126	286	37	44	15	1 899
2009	773	286	423	128	346	38	47	14	2 054
2009									
Sep Qtr	774	296	415	127	366	42	46	14	2 080
Dec Qtr	777	314	419	124	383	42	46	13	2 118
2010									
Mar Qtr	772	318	433	127	392	34	51	14	2 140
Jun Qtr	787	317	451	122	404	39	48	20	2 188
Sep Qtr	754	318	432	127	397	32	48	12	2 120
Jul	766	317	437	126	399	36	49	15	2 144
Aug	747	318	426	125	403	29	46	11	2 106
Sep	747	321	432	130	390	31	49	11	2 110
PERSONS (AVERAGE DAILY NUMBER)									
2007	9 576	4 144	5 571	1 776	3 774	537	856	172	26 305
2008	9 804	4 240	5 549	1 908	3 824	526	939	179	26 885
2009	10 310	4 367	5 622	1 951	4 402	513	1 073	170	28 390
2009									
Sep Qtr	10 387	4 409	5 606	1 983	4 571	513	1 037	163	28 670
Dec Qtr	10 304	4 507	5 537	1 944	4 781	498	1 074	177	28 822
2010									
Mar Qtr	10 312	4 504	5 655	1 949	4 855	471	1 109	194	29 049
Jun Qtr	10 417	4 549	5 723	1 963	4 832	476	1 109	220	29 289
Sep Qtr	10 213	4 578	5 590	1 968	4 691	491	1 100	212	28 843
Jul	10 278	4 554	5 595	1 966	4 724	492	1 088	211	28 907
Aug	10 197	4 573	5 585	1 967	4 708	487	1 093	212	28 822
Sep	10 163	4 609	5 589	1 972	4 639	495	1 120	213	28 800

- (a) Data prior to the September quarter 2009 includes ACT prisoners held in NSW prisons. The ACT in NSW figures are a subset of the NSW figures and are not separately counted in the Australian totals. From the September quarter 2009, ACT prisoners are no longer held in NSW prisons – see Explanatory Notes, paragraph 38.
- (b) Data prior to the September quarter 2007 may be slightly overstated – see Explanatory Notes, paragraph 31.
- (c) Data prior to the September quarter 2009 includes ACT prisoners held in ACT as well as ACT prisoners that were held in NSW – see Explanatory Notes, paragraph 38.
- (d) For the period prior to the September quarter 2009, ACT Prisoners held in NSW prisons are included in both NSW and ACT figures. The sum of the state/territory columns will therefore be greater than the Australian total – see Explanatory Notes, paragraph 38.

IMPRISONMENT RATES(a), By sex

	NSW(b)	Vic.	Qld(c)	SA	WA	Tas.	NT	ACT(d)	Aust. (c)
MALES (RATE PER 100,000 ADULT POPULATION)									
2007	339.7	199.7	326.5	276.4	435.7	275.6	1 031.6	126.7	309.4
2008	345.0	201.0	316.6	293.2	432.4	265.3	1 097.6	125.5	310.9
2009	357.3	199.7	311.7	295.7	476.2	255.1	1 232.0	116.5	319.3
2009									
Sep Qtr	359.7	200.5	310.0	300.4	491.4	252.2	1 186.4	111.2	321.3
Dec Qtr	354.9	203.1	303.7	293.5	510.2	243.5	1 218.3	122.1	320.9
2010									
Mar Qtr	351.4	200.5	306.7	292.0	512.5	232.8	1 242.6	133.2	320.0
Jun Qtr	353.1	201.7	308.0	294.1	505.8	232.0	1 239.9	147.0	320.8
Sep Qtr	345.0	201.7	299.4	292.8	486.8	242.8	1 223.4	145.6	314.4
Jul	346.9	200.6	299.4	292.6	490.3	240.9	1 207.6	143.1	314.9
Aug	344.6	201.5	299.5	292.9	488.1	242.0	1 217.7	146.4	314.3
Sep	343.4	203.0	299.4	292.9	481.7	245.6	1 245.5	147.4	314.0
FEMALES (RATE PER 100,000 ADULT POPULATION)									
2007	26.3	12.3	26.1	18.9	39.8	18.2	53.6	8.0	23.2
2008	26.5	11.7	25.9	19.8	35.3	19.1	59.5	11.4	22.9
2009	27.9	13.4	24.9	19.8	41.4	19.4	61.7	10.6	24.2
2009									
Sep Qtr	27.9	13.9	24.4	19.7	43.5	21.2	59.9	10.3	24.4
Dec Qtr	27.8	14.7	24.5	19.1	45.4	21.4	58.8	9.1	24.8
2010									
Mar Qtr	27.4	14.7	25.0	19.5	45.8	17.0	64.9	9.8	24.8
Jun Qtr	27.8	14.6	25.9	18.7	46.9	19.4	60.5	14.2	25.2
Sep Qtr	26.5	14.5	24.7	19.4	45.8	16.2	60.3	8.6	24.3
Jul	26.9	14.5	25.0	19.2	46.0	18.2	61.7	10.4	24.6
Aug	26.3	14.5	24.3	19.1	46.5	14.8	57.7	8.0	24.1
Sep	26.3	14.7	24.7	19.8	45.0	15.5	61.6	7.5	24.2
PERSONS (RATE PER 100,000 ADULT POPULATION)									
2007	180.1	104.0	175.0	144.9	238.2	143.4	566.5	66.3	164.2
2008	182.6	104.4	169.9	153.5	234.9	138.9	601.6	67.5	164.7
2009	189.4	104.8	167.2	154.7	260.7	134.2	670.3	62.7	169.7
2009									
Sep Qtr	190.6	105.4	166.1	156.9	269.5	133.7	646.0	60.0	170.8
Dec Qtr	188.2	107.1	163.0	153.4	280.1	129.5	662.3	64.9	170.8
2010									
Mar Qtr	186.5	106.0	164.6	152.9	281.1	122.1	676.4	70.7	170.5
Jun Qtr	187.5	106.5	165.7	153.5	278.3	123.0	672.9	79.7	171.1
Sep Qtr	182.9	106.5	160.9	153.2	268.2	126.5	664.5	76.2	167.5
Jul	184.0	105.9	161.0	153.0	270.1	126.6	657.0	75.9	167.8
Aug	182.6	106.4	160.7	153.1	269.2	125.4	660.2	76.3	167.3
Sep	182.0	107.2	160.8	153.5	265.2	127.6	676.6	76.5	167.2

- (a) Imprisonment rates are based on Estimated Resident Population counts – see Explanatory Notes, paragraphs 17–21.
- (b) Excludes ACT prisoners that were held in NSW prisons prior to September quarter 2009.
- (c) Data prior to the September quarter 2007 may be slightly overstated – see Explanatory Notes, paragraph 31.
- (d) Includes ACT prisoners held in ACT as well as ACT prisoners that were held in NSW prior to the September quarter 2009 – see Explanatory Notes, paragraph 38.

PERSONS IN FULL-TIME CUSTODY, By type of custody

	NSW(a)(b)	Vic.	Qld(c)	SA	WA(d)	Tas.	NT	ACT(e)	Aust.(f)(g)
PERSONS IN SECURE CUSTODY (AVERAGE DAILY NUMBER)									
2007	5 893	3 743	4 853	1 581	2 771	477	621	97	20 010
2008	6 229	3 797	4 952	1 703	2 794	468	663	120	20 701
2009	6 734	3 911	4 977	1 736	3 344	460	750	r157	r22 064
2009									
Sep Qtr	6 796	3 935	4 875	1 766	3 699	459	721	r163	r22 414
Dec Qtr	6 743	4 028	4 837	1 736	3 858	446	r756	r177	22 581
2010									
Mar Qtr	6 720	4 039	5 003	1 752	3 879	419	774	r194	r22 780
Jun Qtr	6 717	4 072	5 113	1 760	3 876	429	778	r220	r22 965
Sep Qtr	6 510	4 083	5 030	1 766	3 746	444	764	212	22 557
Jul	6 574	4 085	5 013	1 764	3 779	448	761	211	22 635
Aug	6 494	4 074	5 034	1 766	3 766	437	752	212	22 535
Sep	6 462	4 092	5 044	1 769	3 692	447	780	213	22 499
PERSONS IN OPEN CUSTODY (AVERAGE DAILY NUMBER)									
2007	3 683	401	717	195	1 003	61	235	75	6 295
2008	3 575	443	597	205	1 030	58	276	59	6 184
2009	3 576	456	645	214	1 061	54	323	r13	r6 329
2009									
Sep Qtr	3 591	475	732	217	874	54	316	..	r6 259
Dec Qtr	3 562	479	700	208	923	52	318	..	r6 242
2010									
Mar Qtr	3 591	465	652	196	976	52	336	..	r6 268
Jun Qtr	3 700	477	610	203	956	47	331	..	r6 324
Sep Qtr	3 703	495	559	202	945	47	336	..	6 287
Jul	3 704	469	582	202	945	43	326	..	6 272
Aug	3 703	499	551	201	942	50	341	..	6 287
Sep	3 701	517	544	203	947	48	340	..	6 301
PERSONS IN CUSTODY (AVERAGE DAILY NUMBER)									
2007	9 576	4 144	5 571	1 776	3 774	537	856	172	26 305
2008	9 804	4 240	5 549	1 908	3 824	526	939	179	26 885
2009	10 310	4 367	5 622	1 951	4 402	513	1 073	170	28 390
2009									
Sep Qtr	10 387	4 409	5 606	1 983	4 571	513	1 037	163	28 670
Dec Qtr	10 304	4 507	5 537	1 944	4 781	498	1 074	177	28 822
2010									
Mar Qtr	10 312	4 504	5 655	1 949	4 855	471	r1 109	194	29 049
Jun Qtr	10 417	4 549	5 723	1 963	4 832	476	1 109	220	29 289
Sep Qtr	10 213	4 578	5 590	1 968	4 691	491	1 100	212	28 843
Jul	10 278	4 554	5 595	1 966	4 724	492	1 088	211	28 907
Aug	10 197	4 573	5 585	1 967	4 708	487	1 093	212	28 822
Sep	10 163	4 609	5 589	1 972	4 639	495	1 120	213	28 800
..	not applicable			(d) Data for the period prior to September quarter 2009 are not comparable – see Explanatory Notes, paragraphs 33.					
r	revised			(e) Data prior to the September quarter 2009 includes ACT prisoners held in ACT as well as ACT prisoners that were held in NSW – see Explanatory Notes, paragraph 38.					
(a)	For the period prior to the September quarter 2009, ACT prisoners held in NSW prisons are included in both NSW and ACT figures. The sum of the state/territory columns will therefore be greater than the Australian total – see Explanatory Notes, paragraph 38.			(f) See footnotes b–d					
(b)	The classification of some NSW correctional facilities changed from March 2008 – see Explanatory Notes, paragraph 29.			(g) For the period prior to the September quarter 2009, ACT prisoners held in NSW prisons are included in both NSW and ACT figures. The sum of the state/territory columns will therefore be greater than the Australian total – see Explanatory Notes, paragraph 38.					
(c)	Data prior to the September quarter 2007 may be slightly overstated – see Explanatory Notes, paragraph 31.								

IMPRISONMENT RATES(a), By type of custody

NSW(b)(c) Vic. Qld(d) SA WA(e) Tas. NT ACT(e)(f) Aust.(g)

PERSONS IN SECURE CUSTODY (RATE PER 100,000 ADULT POPULATION)

2007	111.5	93.9	152.5	129.0	174.9	127.3	410.9	37.5	124.9
2008	116.5	93.5	151.6	137.0	171.6	123.7	424.8	45.2	126.8
2009	123.8	93.8	148.0	137.7	r198.2	120.1	468.3	r57.9	r131.9
2009									
Sep Qtr	124.7	94.1	144.4	139.8	r218.0	119.8	449.1	r60.0	r133.5
Dec Qtr	123.2	95.7	142.4	136.9	r226.1	116.1	466.2	r64.9	r133.8
2010									
Mar Qtr	121.5	95.0	145.6	137.5	r224.7	108.5	471.8	r70.7	r133.7
Jun Qtr	120.9	95.3	148.1	137.6	r223.3	110.9	472.0	r79.7	r134.1
Sep Qtr	116.6	95.0	144.8	137.5	214.2	114.4	461.5	76.2	131.0
Jul	117.7	95.0	144.3	137.3	216.1	115.4	459.9	75.9	131.4
Aug	116.3	94.7	144.9	137.5	215.3	112.6	454.0	76.3	130.8
Sep	115.7	95.2	145.2	137.7	211.1	115.2	471.0	76.5	130.6

PERSONS IN OPEN CUSTODY (RATE PER 100,000 ADULT POPULATION)

2007	68.6	10.1	22.5	15.9	63.3	16.2	155.6	28.8	39.3
2008	66.0	10.9	18.3	16.5	63.2	15.3	176.8	22.4	37.9
2009	65.6	10.9	19.2	17.0	r62.9	14.0	202.0	r4.9	r37.8
2009									
Sep Qtr	65.9	11.3	21.7	17.1	r51.5	14.0	196.9	..	r37.3
Dec Qtr	65.1	11.4	20.6	16.4	r54.1	13.4	196.0	..	r37.0
2010									
Mar Qtr	64.9	10.9	19.0	15.4	r56.5	13.6	204.6	..	r36.8
Jun Qtr	66.6	11.2	17.7	15.9	r55.1	12.0	201.0	..	r36.9
Sep Qtr	66.3	11.5	16.1	15.7	54.0	12.1	202.9	..	36.5
Jul	66.3	10.9	16.8	15.7	54.0	11.2	197.1	..	36.4
Aug	66.3	11.6	15.9	15.6	53.9	12.8	206.2	..	36.5
Sep	66.3	12.0	15.7	15.8	54.1	12.3	205.6	..	36.6

PERSONS IN CUSTODY (RATE PER 100,000 ADULT POPULATION)

2007	180.1	104.0	175.0	144.9	238.2	143.4	566.5	66.3	164.2
2008	182.6	104.4	169.9	153.5	234.9	138.9	601.6	67.5	164.7
2009	189.4	104.8	167.2	154.7	260.7	134.2	670.3	62.7	169.7
2009									
Sep Qtr	190.6	105.4	166.1	156.9	269.5	133.7	646.0	60.0	170.8
Dec Qtr	188.2	107.1	163.0	153.4	280.1	129.5	662.3	64.9	170.8
2010									
Mar Qtr	186.5	106.0	164.6	152.9	281.1	122.1	676.4	70.7	170.5
Jun Qtr	187.5	106.5	165.7	153.5	278.3	123.0	672.9	79.7	171.1
Sep Qtr	182.9	106.5	160.9	153.2	268.2	126.5	664.5	76.2	167.5
Jul	184.0	105.9	161.0	153.0	270.1	126.6	657.0	75.9	167.8
Aug	182.6	106.4	160.7	153.1	269.2	125.4	660.2	76.3	167.3
Sep	182.0	107.2	160.8	153.5	265.2	127.6	676.6	76.5	167.2

.. not applicable

r revised

(a) Imprisonment rates are based on Estimated Resident Population counts – see Explanatory Notes, paragraphs 17–21.

(b) Excludes ACT prisoners that were held in NSW prisons prior to September quarter 2009.

(c) The classification of some NSW correctional facilities changed from March 2008 – see Explanatory Notes, paragraph 29.

(d) Data prior to the September quarter 2007 may be slightly overstated – see Explanatory Notes, paragraph 31.

(e) Data prior to the September quarter 2009 are not comparable – see Explanatory Notes, paragraphs 33.

(f) Includes ACT prisoners held in ACT as well as ACT prisoners that were held in NSW prior to the September quarter 2009 – see Explanatory Notes, paragraph 38.

(g) See footnotes c–e.

PERSONS IN FULL-TIME CUSTODY(a), By legal status

	NSW(b)	Vic.	Qld(c)	SA	WA	Tas.	NT	ACT(d)	Aust.(c)(e)
UNSENTENCED (NUMBER ON FIRST DAY OF MONTH)									
2007	2 400	785	1 251	619	682	115	170	67	6 089
2008	2 545	836	1 223	650	752	112	213	92	6 423
2009	2 686	856	1 152	671	718	110	258	79	6 529
2009									
Sep Qtr	2 707	844	1 137	691	710	112	240	59	6 500
Dec Qtr	2 596	891	1 139	660	727	99	239	72	6 423
2010									
Mar Qtr	2 737	836	1 204	658	736	92	259	87	6 609
Jun Qtr	2 778	861	1 215	715	829	99	238	92	6 826
Sep Qtr	2 591	812	1 160	676	765	108	245	79	6 437
SENTENCED (NUMBER ON FIRST DAY OF MONTH)									
2007	7 170	3 351	4 312	1 161	3 073	419	687	101	20 174
2008	7 264	3 396	4 306	1 271	3 060	413	719	82	20 429
2009	7 620	3 499	4 452	1 294	3 647	404	814	88	21 800
2009									
Sep Qtr	7 692	3 546	4 475	1 301	3 821	403	798	103	22 138
Dec Qtr	7 752	3 613	4 393	1 304	4 045	408	828	103	22 447
2010									
Mar Qtr	7 547	3 640	4 391	1 267	4 092	359	839	108	22 243
Jun Qtr	7 648	3 700	4 534	1 264	4 010	378	875	124	22 535
Sep Qtr	7 645	3 755	4 441	1 308	3 969	383	852	134	22 487
TOTAL (NUMBER ON FIRST DAY OF MONTH)									
2007	9 570	4 137	5 563	1 781	3 755	534	857	168	26 264
2008	9 809	4 233	5 529	1 921	3 812	525	931	174	26 852
2009	10 306	4 355	5 604	1 964	4 365	514	1 072	167	28 329
2009									
Sep Qtr	10 399	4 390	5 611	1 992	4 531	516	1 038	162	28 638
Dec Qtr	10 348	4 504	5 532	1 964	4 772	506	1 067	176	28 870
2010									
Mar Qtr	10 284	4 476	5 594	1 926	4 828	451	1 098	195	28 852
Jun Qtr	10 426	4 561	5 749	1 980	4 839	477	1 113	216	29 361
Sep Qtr	10 235	4 567	5 601	1 984	4 734	491	1 097	213	28 924
Jul	10 300	4 537	5 626	1 991	4 772	491	1 088	222	29 027
Aug	10 230	4 576	5 586	1 959	4 742	492	1 087	209	28 881
Sep	10 176	4 589	5 590	2 003	4 689	491	1 116	209	28 863

- (a) Figures for the quarter and year for first day of month counts are calculated as a simple average – see Explanatory Notes, paragraph 5.
- (b) Data prior to the September quarter 2009 includes ACT prisoners held in NSW prisons. From the September quarter 2009 ACT prisoners are no longer held in NSW prisons – see Explanatory Notes, paragraph 38.
- (c) Data prior to the September quarter 2007 may be slightly overstated – see Explanatory Notes, paragraph 31.
- (d) Data prior to the September quarter 2009 includes ACT prisoners held in ACT as well as ACT prisoners that were held in NSW – see Explanatory Notes, paragraph 38.
- (e) For the period prior to the September quarter 2009, ACT Prisoners held in NSW prisons are included in both NSW and ACT figures. The sum of the state/territory columns will therefore be greater than the Australian total – see Explanatory Notes, paragraph 38.

IMPRISONMENT RATES(a), By legal status

	NSW(b)	Vic.	Qld(c)	SA	WA	Tas.	NT	ACT(d)(e)	Aust.(c)
UNSENTENCED (RATE PER 100,000 ADULT POPULATION)									
2007	45.6	19.7	39.3	50.5	43.0	30.7	112.7	25.8	38.0
2008	47.8	20.6	37.5	52.3	46.2	29.5	136.2	34.7	39.4
2009	49.4	20.5	34.3	53.2	42.5	28.8	160.9	29.1	39.0
2009									
Sep Qtr	49.7	20.2	33.7	54.7	41.9	29.3	149.7	21.7	38.7
Dec Qtr	47.4	21.2	33.5	52.1	42.6	25.7	147.6	26.5	38.1
2010									
Mar Qtr	49.5	19.7	35.0	51.6	42.6	23.8	158.1	31.6	38.8
Jun Qtr	50.0	20.2	35.2	55.9	47.7	25.5	144.6	33.3	39.9
Sep Qtr	46.4	18.9	33.4	52.6	43.8	27.9	148.2	28.5	37.4
SENTENCED (RATE PER 100,000 ADULT POPULATION)									
2007	134.4	84.1	135.5	94.7	194.0	111.8	454.8	39.1	125.9
2008	134.9	83.6	131.9	102.2	187.9	109.1	460.6	31.1	125.2
2009	139.9	84.0	132.4	102.6	216.0	105.5	508.6	32.4	130.3
2009									
Sep Qtr	141.1	84.8	132.5	103.0	225.2	105.2	496.9	37.8	131.9
Dec Qtr	141.6	85.9	129.3	102.9	237.0	106.1	510.8	37.9	133.0
2010									
Mar Qtr	136.5	85.6	127.8	99.4	237.0	93.1	511.3	39.2	130.5
Jun Qtr	137.7	86.6	131.3	98.9	231.0	97.8	530.6	45.1	131.6
Sep Qtr	136.9	87.3	127.8	101.8	226.9	98.6	514.4	48.2	130.5
TOTAL (RATE PER 100,000 ADULT POPULATION)									
2007	180.0	103.8	174.8	145.3	237.0	142.5	567.4	64.9	163.9
2008	182.7	104.2	169.3	154.6	234.1	138.6	596.8	65.8	164.5
2009	189.3	104.5	166.6	155.8	258.5	134.3	669.5	61.6	169.4
2009									
Sep Qtr	190.8	104.9	166.2	157.7	267.1	134.5	646.6	59.5	170.6
Dec Qtr	189.0	107.1	162.8	154.9	279.6	131.8	658.4	64.4	171.1
2010									
Mar Qtr	186.0	105.3	162.9	151.1	279.6	117.0	669.4	70.8	169.3
Jun Qtr	187.7	106.8	166.5	154.8	278.7	123.3	675.2	78.4	171.5
Sep Qtr	183.3	106.2	161.2	154.5	270.7	126.5	662.6	76.7	167.9
Jul	184.4	105.5	161.9	155.0	272.8	126.5	657.2	79.8	168.5
Aug	183.2	106.4	160.8	152.5	271.1	126.7	656.6	75.1	167.7
Sep	182.2	106.7	160.9	155.9	268.1	126.5	674.1	75.1	167.6

(a) Imprisonment rates are based on Estimated Resident Population counts – see Explanatory Notes, paragraphs 17–21.

(b) Excludes ACT prisoners that were held in NSW prisons prior to September quarter 2009.

(c) Data prior to the September quarter 2007 may be slightly overstated – see Explanatory Notes, paragraph 31.

(d) Includes ACT prisoners held in ACT as well as ACT prisoners that were held in NSW prior to the September quarter 2009 – see Explanatory Notes, paragraph 38.

(e) Data prior to the June quarter 2009 mainly included unsentenced persons in ACT prison custody – see Explanatory Notes, paragraph 39.

SENTENCED PRISONER RECEPTIONS INTO FULL-TIME CUSTODY(a)

	NSW(b)	Vic.	Qld	SA	WA	Tas.	NT(c)	ACT(d)	Aust.(e)
NUMBER									
2007	8 625	3 914	7 027	1 457	3 805	753	1 394	158	27 005
2008	9 098	3 915	8 223	1 507	4 355	747	1 442	131	29 306
2009	8 848	4 190	7 728	1 583	5 372	635	1 674	123	30 153
2009									
Sep Qtr	2 375	1 089	1 883	431	1 333	162	400	36	7 709
Dec Qtr	2 093	1 154	1 809	427	1 295	143	524	37	7 482
2010									
Mar Qtr	2 016	1 026	2 040	376	1 234	152	516	27	7 387
Jun Qtr	2 000	1 085	1 914	389	1 342	121	507	69	7 427
Sep Qtr	2 156	1 108	1 925	428	1 544	140	473	46	7 820

- (a) The count of sentenced prisoner receptions is an addition of the total number for each month within the reference period – see Explanatory Notes, paragraphs 2–5.
- (b) Data prior to the September quarter 2009 includes ACT prisoners held in ACT as well as ACT prisoners that were held in NSW – see Explanatory Notes, paragraph 38.
- (c) A new processing system was introduced in September 2009 resulting in increased counts from the December Quarter 2009 – see Explanatory Notes, paragraph 37.
- (d) Data prior to the September quarter 2009 includes ACT prisoners held in ACT as well as ACT prisoners that were held in NSW – see Explanatory Notes, paragraph 38.
- (e) For the period prior to the September quarter 2009, ACT Prisoners held in NSW prisons are included in both NSW and ACT figures. The sum of the state/territory columns will therefore be greater than the Australian total – see Explanatory Notes, paragraph 38.

PERSONS IN PERIODIC DETENTION(a)(b), By sex

	NSW		ACT	
	no.(c)	rate(d)	no.(c)	rate(d)
MALES				
2007	685	26.5	54	42.7
2008	653	25.0	50	38.1
2009	740	27.8	44	33.0
2009				
Sep Qtr	758	28.4	45	33.4
Dec Qtr	797	29.7	51	38.0
2010				
Mar Qtr	778	28.6	47	34.9
Jun Qtr	718	26.3	46	34.1
Sep Qtr	617	22.5	46	33.7
Jul	656	23.9	46	33.5
Aug	621	22.6	47	34.4
Sep	572	20.9	46	33.2
FEMALES				
2007	74	2.8	5	4.1
2008	65	2.4	6	4.4
2009	67	2.4	7	4.9
2009				
Sep Qtr	73	2.6	6	4.6
Dec Qtr	68	2.4	5	3.9
2010				
Mar Qtr	65	2.3	7	5.2
Jun Qtr	58	2.1	7	5.3
Sep Qtr	51	1.8	7	5.0
Jul	54	1.9	7	5.1
Aug	52	1.8	8	5.5
Sep	47	1.6	6	4.4
PERSONS				
2007	759	14.4	60	23.0
2008	718	13.5	55	20.9
2009	806	14.8	51	18.7
2009				
Sep Qtr	831	15.2	51	18.8
Dec Qtr	865	15.8	56	20.7
2010				
Mar Qtr	843	15.2	55	19.9
Jun Qtr	776	14.0	54	19.5
Sep Qtr	668	12.0	53	19.2
Jul	710	12.7	53	19.1
Aug	673	12.1	55	19.8
Sep	619	11.1	52	18.6

- (a) Periodic detention is a form of custody only used in NSW and the ACT. This order type has ceased from October 2010 in New South Wales.
- (b) Imprisonment rates are based on Estimated Resident Population counts – see Explanatory Notes, paragraphs 17–21.
- (c) Average daily number.
- (d) Rate per 100,000 adult population.

	NSW	Vic.	Qld	SA	WA	Tas.	NT	ACT	Aust.
MALES (NUMBER ON FIRST DAY OF MONTH)									
2007	338	76	66	14	52	5	16	5	572
2008	327	83	68	22	43	6	13	2	563
2009	351	89	80	16	51	9	12	—	608
2009									
Sep Qtr	358	93	75	18	52	9	12	—	616
Dec Qtr	358	97	82	15	61	9	15	—	637
2010									
Mar Qtr	340	97	89	20	66	4	15	—	631
Jun Qtr	340	96	91	15	64	4	14	1	627
Sep Qtr	342	103	96	18	75	4	17	2	658
FEMALES (NUMBER ON FIRST DAY OF MONTH)									
2007	58	5	16	2	7	3	—	—	93
2008	73	7	22	3	8	6	—	—	121
2009	68	7	20	4	12	4	2	—	117
2009									
Sep Qtr	71	8	18	4	13	3	2	—	119
Dec Qtr	66	10	25	4	12	5	2	—	124
2010									
Mar Qtr	68	19	24	2	13	3	2	—	132
Jun Qtr	68	27	27	3	15	2	2	—	145
Sep Qtr	69	30	26	2	14	2	2	—	146
PERSONS (NUMBER ON FIRST DAY OF MONTH)									
2007	396	81	82	16	59	9	16	5	664
2008	399	90	90	25	52	12	13	2	684
2009	420	97	100	20	62	12	14	—	726
2009									
Sep Qtr	429	101	93	21	65	12	13	—	735
Dec Qtr	424	106	107	19	74	14	17	—	761
2010									
Mar Qtr	408	116	113	22	79	7	17	—	762
Jun Qtr	408	124	118	19	80	6	17	—	772
Sep Qtr	411	133	122	21	89	7	19	2	804
Jul	411	127	129	22	83	np	22	np	802
Aug	406	132	123	19	92	np	19	np	800
Sep	415	140	115	21	93	7	16	3	810

— nil or rounded to zero (including null cells)

np not available for publication but included in totals where applicable, unless otherwise indicated

- (a) Counts reflect the state or territory in which a prisoner was sentenced, not where they were held in custody.
- (b) Figures for the quarter and year for the first day of the month counts are calculated as a simple average – see Explanatory Notes, paragraph 5.

	NSW(b)	Vic.	Qld(c)	SA	WA	Tas.	NT	ACT(d)	Aust.(e)(c)
MALES (AVERAGE DAILY NUMBER)									
2007	1 771	214	1 355	349	1 420	59	671	19	5 847
2008	1 852	229	1 364	383	1 444	59	736	20	6 080
2009	2 033	233	1 435	416	1 635	60	842	23	6 673
2009									
Sep Qtr	2 069	225	1 459	425	1 672	59	814	22	6 746
Dec Qtr	2 031	249	1 441	421	1 759	56	835	23	6 815
2010									
Mar Qtr	2 057	255	1 528	414	1 753	60	858	30	6 955
Jun Qtr	2 091	259	1 538	424	1 712	60	867	34	6 984
Sep Qtr	2 043	255	1 533	425	1 631	63	853	33	6 835
Jul	2 042	258	1 537	416	1 656	62	832	33	6 837
Aug	2 049	250	1 524	424	1 637	61	842	31	6 818
Sep	2 036	257	1 537	434	1 600	66	885	35	6 849
FEMALES (AVERAGE DAILY NUMBER)									
2007	209	15	115	29	175	7	32	1	584
2008	213	17	115	28	143	8	36	3	561
2009	226	19	123	31	165	7	38	3	612
2009									
Sep Qtr	224	17	121	29	172	8	36	2	609
Dec Qtr	225	24	127	29	190	7	39	1	643
2010									
Mar Qtr	224	26	127	34	195	6	43	3	657
Jun Qtr	219	27	139	31	197	7	41	2	663
Sep Qtr	201	24	138	35	186	6	40	2	633
Jul	201	24	135	36	192	6	40	3	636
Aug	200	23	135	35	190	5	38	1	628
Sep	202	26	144	34	176	7	43	1	634
PERSONS (AVERAGE DAILY NUMBER)									
2007	1 980	229	1 471	378	1 594	66	703	20	6 430
2008	2 065	245	1 478	411	1 587	67	773	23	6 641
2009	2 259	252	1 557	447	1 800	66	880	25	7 285
2009									
Sep Qtr	2 292	243	1 581	454	1 844	67	850	25	7 355
Dec Qtr	2 256	273	1 568	450	1 949	63	874	24	7 457
2010									
Mar Qtr	2 281	281	1 654	449	1 948	66	901	32	7 613
Jun Qtr	2 310	286	1 676	455	1 909	67	908	36	7 647
Sep Qtr	2 244	279	1 670	460	1 818	69	893	35	7 467
Jul	2 243	282	1 672	452	1 848	68	872	36	7 473
Aug	2 249	273	1 659	459	1 827	67	880	32	7 446
Sep	2 238	283	1 681	468	1 776	73	928	36	7 483

(a) Excludes persons whose Aboriginal and Torres Strait Islander status is unknown – see Explanatory Notes, paragraph 28.

(b) For the period prior to the September quarter 2009, ACT Prisoners held in NSW prisons are included in both NSW and ACT figures. The sum of the state/territory columns will therefore be greater than the Australian total – see Explanatory Notes, paragraph 38.

(c) Data prior to the September quarter 2007 may be slightly overstated – see Explanatory Notes, paragraph 31.

(d) Data prior to the September quarter 2009 includes ACT prisoners held in ACT as well as ACT prisoners that were held in NSW – see Explanatory Notes, paragraph 38.

(e) For the period prior to the September quarter 2009, ACT Prisoners held in NSW prisons are included in both NSW and ACT figures. The sum of the state/territory columns will therefore be greater than the Australian total – see Explanatory Notes, paragraph 38.

ABORIGINAL AND TORRES STRAIT ISLANDER IMPRISONMENT RATES(a)(b), By sex

	NSW(c)	Vic.	Qld(d)	SA	WA	Tas.	NT	ACT(e)	Aust.(d)
MALES (RATE PER 100,000 ADULT ABORIGINAL AND TORRES STRAIT ISLANDER POPULATION)									
2007	4 200.0	2 250.6	3 292.6	4 457.2	6 912.5	1 130.8	3 659.1	1 501.3	4 012.2
2008	4 261.4	2 317.8	3 191.4	4 753.7	6 833.2	1 096.0	3 901.9	1 565.5	4 035.9
2009	4 648.1	2 337.5	3 324.5	4 954.0	7 519.9	1 072.0	4 393.7	1 676.9	4 360.2
2009									
Sep Qtr	4 622.9	2 210.6	3 292.2	5 101.8	7 662.2	1 046.1	4 209.7	1 661.7	4 331.5
Dec Qtr	4 538.0	2 441.8	3 250.8	5 046.7	8 062.6	989.8	4 319.5	1 702.3	4 375.5
2010									
Mar Qtr	4 448.7	2 410.8	3 314.2	4 825.7	7 803.8	1 027.9	4 319.7	2 164.3	4 318.7
Jun Qtr	4 521.3	2 441.3	3 335.2	4 935.9	7 623.6	1 037.7	4 363.6	2 468.4	4 336.7
Sep Qtr	4 416.8	2 404.8	3 324.6	4 943.1	7 263.6	1 082.3	4 293.3	2 388.6	4 243.7
Jul	4 416.4	2 433.5	3 334.2	4 843.4	7 373.7	1 069.4	4 191.4	2 403.3	4 245.3
Aug	4 430.8	2 355.3	3 306.5	4 936.5	7 288.9	1 051.2	4 237.4	2 267.9	4 233.4
Sep	4 402.8	2 426.3	3 333.6	5 053.0	7 123.6	1 127.9	4 456.3	2 498.2	4 252.7
FEMALES (RATE PER 100,000 ADULT ABORIGINAL AND TORRES STRAIT ISLANDER POPULATION)									
2007	473.2	150.1	265.9	343.9	836.9	137.9	159.1	71.4	380.1
2008	466.9	163.1	254.6	316.1	666.7	137.1	177.8	235.4	354.8
2009	492.1	186.9	266.2	343.5	731.4	121.2	188.3	198.2	379.1
2009									
Sep Qtr	477.1	161.3	260.2	319.9	779.5	134.9	170.9	165.3	372.9
Dec Qtr	480.0	228.9	272.2	327.3	861.0	126.4	185.3	60.6	393.6
2010									
Mar Qtr	462.6	236.6	262.4	372.5	858.1	95.8	201.4	179.9	390.3
Jun Qtr	453.1	248.2	287.2	339.7	864.3	113.0	191.4	167.0	393.6
Sep Qtr	416.1	222.5	285.7	379.7	818.7	102.6	187.0	116.9	375.6
Jul	415.4	219.1	279.2	390.5	843.7	95.3	184.8	198.6	377.4
Aug	414.3	210.9	279.3	379.6	835.9	90.0	178.7	78.9	373.0
Sep	418.7	238.0	298.9	368.8	775.2	123.0	198.0	71.7	376.4
PERSONS (RATE PER 100,000 ADULT ABORIGINAL AND TORRES STRAIT ISLANDER POPULATION)									
2007	2 285.8	1 181.0	1 739.1	2 321.0	3 850.6	623.4	1 833.9	787.7	2 148.9
2008	2 317.1	1 222.0	1 685.4	2 450.4	3 725.2	608.2	1 961.6	902.0	2 150.0
2009	2 517.7	1 244.6	1 746.1	2 561.0	4 058.0	590.2	2 227.9	933.0	2 316.4
2009									
Sep Qtr	2 501.9	1 166.4	1 738.1	2 624.9	4 198.3	583.3	2 107.2	912.1	2 305.3
Dec Qtr	2 461.9	1 314.3	1 724.1	2 602.1	4 438.2	551.3	2 167.3	879.9	2 337.4
2010									
Mar Qtr	2 411.5	1 304.3	1 753.8	2 520.2	4 309.6	555.3	2 178.9	1 167.1	2 310.7
Jun Qtr	2 442.2	1 325.2	1 776.6	2 556.4	4 223.2	568.9	2 194.7	1 311.9	2 321.2
Sep Qtr	2 372.2	1 294.2	1 770.7	2 580.6	4 021.3	585.6	2 158.7	1 247.0	2 266.5
Jul	2 371.6	1 306.6	1 772.1	2 538.0	4 088.6	575.5	2 108.6	1 295.4	2 268.3
Aug	2 378.1	1 264.0	1 758.6	2 577.3	4 042.6	563.9	2 127.5	1 167.9	2 260.1
Sep	2 366.6	1 312.6	1 781.9	2 627.9	3 929.9	618.5	2 242.7	1 278.8	2 271.3

(a) Rates are based on Aboriginal and Torres Strait Islander adult population estimates and projections for 30 June of the relevant calendar year – see Explanatory Notes, paragraphs 22–25.

(b) Excludes persons whose Aboriginal and Torres Strait Islander status is unknown – see Explanatory Notes, paragraph 28.

(c) Excludes ACT prisoners that were held in NSW prisons prior to September quarter 2009.

(d) Data prior to the September quarter 2007 may be slightly overstated – see Explanatory Notes paragraph 31.

(e) Includes ACT prisoners held in ACT as well as ACT prisoners held in NSW – see Explanatory Notes, paragraph 38.

ABORIGINAL AND TORRES STRAIT ISLANDER PERSONS IN FULL-TIME CUSTODY(a)(b), By legal status

	NSW(c)	Vic.	Qld(d)	SA	WA	Tas.	NT	ACT(e)	Aust.(d)(f)
UNSENTENCED (NUMBER ON FIRST DAY OF MONTH)									
2007	451	52	331	160	278	14	143	9	1 437
2008	492	52	335	169	307	15	174	14	1 560
2009	537	52	299	189	297	18	210	15	1 615
2009									
Sep Qtr	531	48	290	187	282	17	192	11	1 558
Dec Qtr	496	64	285	185	299	14	190	14	1 548
2010									
Mar Qtr	536	52	331	184	315	15	216	19	1 668
Jun Qtr	576	58	355	199	339	17	194	17	1 755
Sep Qtr	519	56	328	199	300	19	202	19	1 642
SENTENCED (NUMBER ON FIRST DAY OF MONTH)									
2007	1 520	176	1 135	217	1 311	53	564	10	4 975
2008	1 563	192	1 140	243	1 274	53	592	9	5 056
2009	1 718	198	1 248	262	1 493	49	671	10	5 647
2009									
Sep Qtr	1 763	191	1 285	267	1 546	48	659	14	5 774
Dec Qtr	1 778	203	1 279	270	1 646	50	682	11	5 918
2010									
Mar Qtr	1 740	227	1 294	260	1 626	47	679	14	5 886
Jun Qtr	1 755	228	1 335	262	1 573	51	720	19	5 943
Sep Qtr	1 741	224	1 338	264	1 539	48	680	16	5 850
TOTAL (NUMBER ON FIRST DAY OF MONTH)									
2007	1 971	228	1 466	377	1 589	67	706	19	6 412
2008	2 056	244	1 475	413	1 581	67	766	23	6 616
2009	2 255	250	1 547	450	1 789	66	881	25	7 262
2009									
Sep Qtr	2 294	239	1 575	455	1 828	65	851	25	7 332
Dec Qtr	2 274	268	1 564	455	1 946	64	871	25	7 467
2010									
Mar Qtr	2 276	279	1 625	444	1 941	62	895	33	7 554
Jun Qtr	2 331	286	1 691	461	1 912	68	914	36	7 698
Sep Qtr	2 260	280	1 666	463	1 839	67	882	35	7 492

- (a) Figures for the quarter and year for first day of the month counts are calculated as a simple average – see Explanatory Notes, paragraph 5.
- (b) Excludes persons whose Aboriginal and Torres Strait Islander status is unknown – see Explanatory Notes, paragraph 28.
- (c) Data prior to the September quarter 2009 includes ACT prisoners held in NSW prisons. From the September quarter 2009 ACT prisoners are no longer held in NSW prisons – see Explanatory Notes, paragraph 38.
- (d) Data prior to the September quarter 2007 may be slightly overstated – see Explanatory Notes, paragraph 31.
- (e) Data prior to the September quarter 2009 includes ACT prisoners held in NSW prisons. From the September quarter 2009 ACT prisoners are no longer held in NSW prisons – see Explanatory Notes, paragraph 38.
- (f) For the period prior to the September quarter 2009, ACT Prisoners held in NSW prisons are included in both NSW and ACT figures. The sum of the state/territory columns will therefore be greater than the Australian total – see Explanatory Notes, paragraph 38.

	NSW(d)	Vic.	Qld(e)	SA	WA	Tas.	NT	ACT(f)	Aust. (e)
UNSENTENCED (RATE PER 100,000 ADULT ABORIGINAL AND TORRES STRAIT ISLANDER POPULATION)									
2007	523.1	268.0	391.9	982.6	670.4	133.0	371.7	344.6	480.2
2008	554.7	260.9	382.4	1 010.7	720.9	133.3	442.9	541.0	505.0
2009	599.6	254.9	335.9	1 080.7	667.8	156.4	532.5	548.1	514.1
2009									
Sep Qtr	579.6	230.8	318.9	1 083.4	641.3	148.7	475.9	408.5	488.3
Dec Qtr	541.4	309.3	313.7	1 069.9	681.5	125.4	470.1	532.2	485.3
2010									
Mar Qtr	566.7	242.6	350.9	1 031.3	696.2	127.0	523.0	684.4	506.3
Jun Qtr	609.3	270.4	376.7	1 115.5	750.0	141.1	468.2	612.4	532.7
Sep Qtr	548.4	259.6	347.7	1 117.4	664.5	158.0	488.4	696.4	498.4
SENTENCED (RATE PER 100,000 ADULT ABORIGINAL AND TORRES STRAIT ISLANDER POPULATION)									
2007	1 752.4	908.2	1 341.9	1 330.5	3 167.0	497.5	1 470.0	410.9	1 662.7
2008	1 751.0	955.4	1 299.3	1 450.2	2 990.6	478.6	1 502.0	351.0	1 636.9
2009	1 913.8	979.2	1 398.8	1 499.6	3 365.7	432.1	1 697.5	382.4	1 795.1
2009									
Sep Qtr	1 923.9	920.0	1 412.9	1 546.0	3 520.6	422.9	1 633.5	507.5	1 809.7
Dec Qtr	1 941.0	977.7	1 406.0	1 559.5	3 748.3	434.6	1 689.6	396.1	1 855.0
2010									
Mar Qtr	1 839.6	1 052.2	1 371.3	1 459.9	3 598.2	395.0	1 640.8	492.3	1 786.6
Jun Qtr	1 855.1	1 055.3	1 415.5	1 471.2	3 481.0	434.5	1 740.7	672.4	1 803.9
Sep Qtr	1 841.0	1 036.8	1 418.0	1 482.4	3 404.3	409.1	1 644.8	564.4	1 775.5
TOTAL (RATE PER 100,000 ADULT ABORIGINAL AND TORRES STRAIT ISLANDER POPULATION)									
2007	2 275.5	1 176.1	1 733.9	2 313.1	3 837.5	630.5	1 841.6	755.5	2 142.9
2008	2 305.7	1 216.3	1 681.7	2 460.9	3 711.5	611.8	1 944.9	891.9	2 141.9
2009	2 513.4	1 234.1	1 734.7	2 580.3	4 033.5	588.4	2 230.0	930.5	2 309.1
2009									
Sep Qtr	2 503.4	1 150.8	1 731.8	2 629.3	4 161.9	571.6	2 109.4	916.0	2 298.0
Dec Qtr	2 482.3	1 287.0	1 719.7	2 629.3	4 429.8	560.0	2 159.8	928.3	2 340.3
2010									
Mar Qtr	2 406.3	1 294.8	1 722.2	2 491.2	4 294.4	521.9	2 163.8	1 176.8	2 292.9
Jun Qtr	2 464.4	1 325.7	1 792.1	2 586.7	4 231.0	575.5	2 208.9	1 284.8	2 336.6
Sep Qtr	2 389.4	1 296.4	1 765.6	2 599.8	4 068.8	567.1	2 133.1	1 260.8	2 273.9

(a) Rates are based on the Aboriginal and Torres Strait Islander adult population estimates and projections for 30 June of the relevant calendar year – see Explanatory Notes, paragraphs 22–25.

(b) Figures for the quarter and year for first day of the month counts are calculated as a simple average – see Explanatory Notes, paragraph 5.

(c) Excludes persons whose Aboriginal and Torres Strait Islander status is unknown – see Explanatory Notes, paragraph 28.

(d) Excludes ACT prisoners that were in NSW prisons.

(e) Data prior to the September quarter 2007 may be slightly overstated – see Explanatory Notes, paragraph 31.

(f) Includes ACT prisoners held in ACT as well as ACT prisoners that were held in NSW – see Explanatory Notes, paragraph 38.

PERSONS IN COMMUNITY-BASED CORRECTIONS(a)(b), By sex

	NSW	Vic.	Qld	SA(c)	WA(d)	Tas.	NT(e)	ACT	Aust.(f)
MALES (NUMBER ON FIRST DAY OF MONTH)									
2007	15 195	6 245	9 928	4 586	4 071	913	1 036	977	42 950
2008	15 075	6 431	11 283	4 752	4 326	908	963	1 100	44 838
2009	15 254	6 943	11 629	4 902	4 377	1 015	r971	1 167	r46 258
2009									
Sep Qtr	15 066	7 137	11 739	4 886	4 364	1 034	1 013	1 163	46 401
Dec Qtr	15 110	7 360	11 935	4 805	4 262	1 080	r945	1 178	r46 675
2010									
Mar Qtr	14 763	7 347	11 990	4 652	4 094	1 109	r991	1 184	r46 130
Jun Qtr	14 423	7 454	12 306	4 621	3 987	1 181	r996	1 220	r46 188
Sep Qtr	13 924	7 751	12 535	4 638	3 812	1 215	1 020	1 233	46 127
Jul	14 037	7 620	12 545	4 623	3 865	1 201	1 017	1 234	46 142
Aug	13 997	7 749	12 484	4 622	3 799	1 200	1 018	1 237	46 106
Sep	13 737	7 884	12 575	4 669	3 771	1 243	1 025	1 228	46 132
FEMALES (NUMBER ON FIRST DAY OF MONTH)									
2007	2 739	1 438	2 656	1 084	1 158	246	138	161	9 619
2008	2 812	1 501	2 838	1 135	1 219	235	137	200	10 078
2009	2 806	1 533	2 979	1 118	1 215	257	r148	227	r10 283
2009									
Sep Qtr	2 819	1 546	3 004	1 122	1 212	257	154	224	10 337
Dec Qtr	2 850	1 609	3 087	1 127	1 226	275	r140	232	r10 546
2010									
Mar Qtr	2 771	1 664	3 045	1 110	1 244	282	r156	239	r10 511
Jun Qtr	2 642	1 651	3 082	1 094	1 230	297	r160	232	10 388
Sep Qtr	2 566	1 683	3 179	1 091	1 154	295	156	230	10 354
Jul	2 606	1 666	3 168	1 095	1 179	288	155	224	10 381
Aug	2 572	1 691	3 183	1 078	1 152	291	155	235	10 357
Sep	2 521	1 691	3 187	1 100	1 131	305	157	231	10 323
PERSONS (NUMBER ON FIRST DAY OF MONTH) (g)									
2007	18 002	7 710	12 584	5 671	5 229	1 159	1 173	1 138	52 665
2008	17 954	7 950	14 120	5 888	5 545	1 143	1 100	1 301	55 001
2009	18 137	8 479	14 608	6 021	5 595	1 272	r1 119	1 394	r56 625
2009									
Sep Qtr	17 966	8 685	14 742	6 008	5 585	1 291	1 167	1 387	56 832
Dec Qtr	18 032	8 969	15 023	5 934	5 488	1 355	r1 085	1 410	r57 296
2010									
Mar Qtr	17 602	9 012	15 035	5 761	5 339	1 391	r1 147	1 423	r56 710
Jun Qtr	17 127	9 108	15 388	5 715	5 217	1 478	r1 156	1 452	r56 641
Sep Qtr	16 549	9 438	15 714	5 731	4 966	1 509	1 176	1 463	56 546
Jul	16 707	9 296	15 713	5 719	5 044	1 489	1 172	1 458	56 598
Aug	16 631	9 441	15 667	5 702	4 951	1 491	1 173	1 472	56 528
Sep	16 309	9 578	15 762	5 771	4 902	1 548	1 182	1 459	56 511

r revised

(a) Figures include persons with breached or suspended orders, with the exception of Vic. and Tas.

(b) Figures for the quarter and year for first day of the month counts are calculated as a simple average – see Explanatory Notes, paragraph 5.

(c) Data movements may be influenced by data entry delays – see Explanatory Notes, paragraph 32.

(d) Data are subject to processing delays of 4 to 6 weeks - see Explanatory Notes, paragraph 35.

(e) Excludes bail data for the December quarter 2009 – see Explanatory Notes paragraph 37.

(f) See footnotes c-e.

(g) Includes persons whose sex is unknown.

COMMUNITY-BASED CORRECTIONS RATES, By sex(a)

	NSW	Vic.	Qld	SA	WA	Tas.	NT	ACT	Aust.
MALES (RATE PER 100,000 ADULT POPULATION)									
2007	588.6	320.2	629.2	764.7	512.8	500.7	1 307.0	766.0	544.2
2008	577.8	323.4	697.4	782.0	528.7	492.6	1 181.4	844.5	557.9
2009	572.5	339.7	697.2	795.2	514.4	545.0	r1 166.4	875.1	r560.9
2009									
Sep Qtr	563.7	347.9	701.1	790.7	509.9	554.0	1 212.1	869.2	560.7
Dec Qtr	562.9	356.6	708.2	774.8	494.5	577.0	r1 119.6	875.7	r560.9
2010									
Mar Qtr	543.9	351.8	704.1	745.7	470.1	590.1	r1 163.1	872.9	r548.5
Jun Qtr	528.9	355.3	719.0	738.3	455.4	626.9	r1 164.0	896.6	r546.7
Sep Qtr	507.8	367.0	727.7	737.6	432.1	642.4	1 186.1	898.8	542.7
Jul	512.0	360.8	728.3	735.2	438.1	635.2	1 182.6	899.5	542.9
Aug	510.5	366.9	724.7	735.1	430.7	634.7	1 183.7	901.7	542.5
Sep	501.0	373.3	730.0	742.5	427.5	657.4	1 191.9	895.1	542.8
FEMALES (RATE PER 100,000 ADULT POPULATION)									
2007	102.3	70.7	165.5	173.2	146.5	127.7	191.4	121.7	118.3
2008	103.6	72.4	172.2	178.7	150.5	121.0	184.1	148.9	121.7
2009	101.3	72.1	175.6	173.5	145.3	130.7	r192.6	165.4	r121.2
2009									
Sep Qtr	101.5	72.5	176.5	173.8	144.2	130.7	200.3	162.4	121.5
Dec Qtr	102.1	75.1	180.3	174.1	145.1	139.7	r180.5	168.1	r123.3
2010									
Mar Qtr	98.4	76.9	175.8	170.5	145.3	142.7	r198.3	171.5	r121.7
Jun Qtr	93.4	76.0	177.0	167.5	142.9	149.6	r201.5	165.9	r119.7
Sep Qtr	90.3	76.9	181.5	166.3	133.1	147.9	195.7	163.2	118.7
Jul	91.7	76.1	180.8	166.9	136.0	144.6	194.8	158.9	119.0
Aug	90.5	77.3	181.7	164.4	132.9	146.1	194.8	166.7	118.7
Sep	88.7	77.3	181.9	167.7	130.5	153.1	197.3	163.9	118.3
PERSONS (RATE PER 100,000 ADULT POPULATION) (b)									
2007	342.3	193.5	395.3	462.7	330.1	309.3	776.4	438.4	328.7
2008	337.3	195.7	432.4	473.7	340.6	301.9	704.9	491.1	337.0
2009	333.8	203.4	434.3	477.6	331.6	332.4	r699.0	515.0	r338.5
2009									
Sep Qtr	329.6	207.6	436.7	475.5	329.3	336.8	726.7	510.8	338.6
Dec Qtr	329.4	213.2	442.1	468.0	321.5	352.7	r669.3	517.1	r339.6
2010									
Mar Qtr	318.3	212.0	437.7	452.0	309.2	360.6	r699.3	517.4	r332.7
Jun Qtr	308.3	213.2	445.6	446.9	300.5	382.1	r701.3	526.2	r330.8
Sep Qtr	296.3	219.5	452.2	446.1	283.9	388.7	710.1	526.0	328.3
Jul	299.2	216.2	452.2	445.2	288.4	383.5	707.9	524.2	328.6
Aug	297.8	219.6	450.9	443.8	283.1	384.0	708.5	529.2	328.2
Sep	292.0	222.8	453.6	449.2	280.3	398.7	713.9	524.6	328.1

r revised

- (a) With the exception of Vic. and Tas., the number of persons in community-based corrections includes those persons with breached or suspended orders.
- (b) Includes persons whose sex is unknown.

NSW Vic. Qld SA(d) WA(e) Tas.(f) NT(g) ACT(h) Aust.(i)

RESTRICTED MOVEMENT (NUMBER ON FIRST DAY OF MONTH)

2007	197	31	..	391	5	..	34	..	659
2008	151	31	..	421	6	..	32	..	640
2009	164	34	..	445	4	..	r34	..	r681
2009									
Sep Qtr	157	36	..	438	4	..	39	..	675
Dec Qtr	147	28	..	419	5	..	r32	..	r631
2010									
Mar Qtr	150	39	..	408	3	..	r32	..	r632
Jun Qtr	137	36	..	417	2	..	r26	..	r618
Sep Qtr	126	36	..	424	—	..	29	..	616
Jul	123	34	..	435	np	..	np	..	621
Aug	128	39	..	415	np	..	np	..	611
Sep	128	36	..	423	—	..	30	..	617

REPARATION-FINE OPTION (NUMBER ON FIRST DAY OF MONTH)

2007	49	1 710	843	702	192	85	—	..	3 580
2008	16	1 763	542	646	208	50	—	..	3 224
2009	21	1 846	498	581	353	26	—	..	3 326
2009									
Sep Qtr	22	1 904	549	575	422	23	—	..	3 494
Dec Qtr	21	2 054	586	558	421	17	—	..	3 658
2010									
Mar Qtr	14	2 218	651	515	358	17	—	..	3 773
Jun Qtr	12	2 239	776	476	342	17	—	..	3 862
Sep Qtr	11	2 358	852	477	291	13	—	..	4 002
Jul	12	2 293	848	474	316	15	—	..	3 958
Aug	12	2 373	849	480	278	13	—	..	4 005
Sep	8	2 409	860	476	278	12	—	..	4 043

REPARATION-COMMUNITY SERVICE (NUMBER ON FIRST DAY OF MONTH)

2007	4 160	672	1 857	1 033	1 622	495	221	115	10 174
2008	3 979	679	1 854	1 005	1 473	500	184	161	9 835
2009	4 180	741	1 943	1 146	1 449	584	r158	190	r10 391
2009									
Sep Qtr	4 230	765	1 982	1 165	1 470	592	179	193	10 577
Dec Qtr	4 192	762	2 142	1 212	1 541	610	r111	201	r10 771
2010									
Mar Qtr	4 062	740	2 240	1 126	1 439	657	r117	211	r10 592
Jun Qtr	4 002	676	2 306	1 075	1 392	722	r119	210	r10 502
Sep Qtr	3 788	668	2 235	1 113	1 292	752	136	203	10 188
Jul	3 868	661	2 244	1 076	1 316	733	124	209	10 231
Aug	3 792	668	2 237	1 114	1 286	729	138	211	10 175
Sep	3 705	675	2 223	1 150	1 275	795	146	189	10 158

.. not applicable

— nil or rounded to zero (including null cells)

np not available for publication but included in totals where applicable, unless otherwise indicated

r revised

(a) If a person has more than one type of order, they are counted against each order in this table. If a person has more than one order of the same order type, they are counted only once in the order type.

(b) Figures for the quarter and year for first day of the month counts are calculated as a simple average – see Explanatory Notes, paragraph 5.

(c) Figures include persons with breached or suspended orders, with the exception of Vic. and Tas.

(d) Data movements may be influenced by data entry delays – see Explanatory Notes, paragraph 32.

(e) Data are subject to processing delays of 4 to 6 weeks – see Explanatory Notes, paragraph 35.

(f) A trial of new bail orders was conducted in the 2007-08 financial year – see Explanatory Notes, paragraph 36.

(g) Caution should be exercised as a new processing system was introduced in September 2009 resulting in significant changes to some community-based order counts. Bail counts were unable to be supplied in December quarter 2009 – see Explanatory Notes paragraph 37.

(h) Data movements for bail orders may have been influenced by data quality checks during the December quarter 2008 – see Explanatory Notes, paragraph 41.

(i) See footnotes d-h.

	NSW	Vic.	Qld	SA(d)	WA(e)	Tas.(f)	NT(g)	ACT(h)	Aust.(i)
SUPERVISION (COMPLIANCE)–PAROLE (NUMBER ON FIRST DAY OF MONTH)									
2007	4 058	1 413	2 290	882	1 143	81	99	117	10 083
2008	4 246	1 494	3 793	903	1 317	96	90	113	12 051
2009	4 286	1 502	4 173	981	1 173	128	r80	100	12 423
2009									
Sep Qtr	4 186	1 506	4 195	973	1 052	137	72	100	12 220
Dec Qtr	4 417	1 521	4 297	982	852	134	r100	105	r12 408
2010									
Mar Qtr	4 378	1 500	4 194	993	713	119	r95	101	r12 093
Jun Qtr	4 253	1 544	4 189	993	597	117	r99	104	r11 896
Sep Qtr	4 255	1 530	4 312	982	543	115	107	110	11 953
Jul	4 256	1 525	4 327	978	557	116	108	107	11 974
Aug	4 249	1 524	4 284	977	552	117	105	110	11 918
Sep	4 260	1 541	4 324	990	519	113	107	113	11 967

	NSW	Vic.	Qld	SA(d)	WA(e)	Tas.(f)	NT(g)	ACT(h)	Aust.(i)
SUPERVISION (COMPLIANCE)–BAIL (NUMBER ON FIRST DAY OF MONTH)									
2007	226	1 019	245	8	7	215	1 721
2008	226	858	275	18	5	229	1 612
2009	207	829	310	..	na	206	1 568
2009									
Sep Qtr	212	811	344	..	35	207	1 608
Dec Qtr	190	757	332	..	na	226	1 505
2010									
Mar Qtr	189	805	298	..	24	231	1 547
Jun Qtr	198	765	302	..	31	246	1 542
Sep Qtr	206	725	300	..	22	269	1 522
Jul	194	736	304	..	27	274	1 535
Aug	206	708	304	..	20	267	1 505
Sep	217	730	291	..	20	267	1 525

	NSW	Vic.	Qld	SA(d)	WA(e)	Tas.(f)	NT(g)	ACT(h)	Aust.(i)
SUPERVISION (COMPLIANCE)–SENTENCED PROBATION (NUMBER ON FIRST DAY OF MONTH)									
2007	11 198	4 093	8 680	2 803	3 485	645	853	840	32 598
2008	11 098	4 184	9 040	3 161	3 645	636	819	1 026	33 609
2009	11 073	4 645	9 123	3 185	3 616	735	r867	1 139	r34 383
2009									
Sep Qtr	10 989	4 743	9 175	3 156	3 606	735	877	1 133	34 415
Dec Qtr	10 790	4 906	9 222	3 118	3 719	812	r896	1 148	r34 611
2010									
Mar Qtr	10 475	4 821	9 211	3 026	3 679	833	r934	1 193	r34 172
Jun Qtr	10 145	4 897	9 471	3 052	3 722	895	r935	1 167	r34 284
Sep Qtr	9 685	5 171	9 676	3 054	3 622	928	951	1 143	34 229
Jul	9 807	5 098	9 652	3 094	3 667	918	950	1 145	34 331
Aug	9 762	5 169	9 667	3 034	3 601	921	952	1 143	34 249
Sep	9 486	5 247	9 709	3 034	3 597	944	950	1 140	34 107

.. not applicable

na not available

r revised

- (a) If a person has more than one type of order, they are counted against each order in this table. If a person has more than one order of the same order type, they are counted only once in the order type.
- (b) Figures for the quarter and year for first day of the month counts are calculated as a simple average – see Explanatory Notes, paragraph 5.
- (c) Figures include persons with breached or suspended orders, with the exception of Vic. and Tas.
- (d) Data movements may be influenced by data entry delays – see Explanatory Notes, paragraph 32.

(e) Data are subject to processing delays of 4 to 6 weeks – see Explanatory Notes, paragraph 35.

(f) A trial of new bail orders was conducted in the 2007-08 financial year – see Explanatory Notes, paragraph 36.

(g) Caution should be exercised as a new processing system was introduced in September 2009 resulting in significant changes to some community-based order counts. Bail counts were unable to be supplied in December quarter 2009 – see Explanatory Notes paragraph 37.

(h) Data movements for bail orders may have been influenced by data quality checks during the December quarter 2008 – see Explanatory Notes, paragraph 41.

(i) See footnotes d-h.

EXPLANATORY NOTES

INTRODUCTION

1 This publication presents statistical series on persons held in either adult corrective services custody or who are serving adult community-based orders in Australia. It contains data on the number of persons by their sex, Aboriginal and Torres Strait Islander status, type of custody, legal status and sentence type; the number of sentenced persons received into corrective services custody each month; and the number of federal prisoners. Experimental data on Aboriginal and Torres Strait Islander persons in community based corrections are also available in the Appendix.

2 Statistics presented in this publication are compiled in three ways:

- Average daily prisoner population: Counts taken on each day of the month are summed and divided by the number of days in that month to determine the average daily prisoner population for that month. The average daily periodic detainee population is a count of persons on periodic detention on each day a centre is open, divided by the number of days a centre is open.
- Sentenced prisoner reception figures: Counts are provided each month on the number of receptions where a prisoner is received as a sentenced prisoner. This includes prisoners with a change of legal status from unsentenced to sentenced.
- First day of the month prisoner population: Counts of prisoners and persons serving community-based corrections orders, taken on or near the first day of the month (see paragraphs 4 and 5).

3 Although national standards and classifications are used in the compilation of these statistics, some discrepancies remain between the states and territories. These are due to legislative and procedural differences between jurisdictions and the way that these differences are reflected in agencies' administrative data systems. As part of its quality assurance strategy, the ABS is working with corrective services agencies to minimise the effect of these differences.

REFERENCE PERIOD

4 The reference period for average daily prisoner population statistics and sentenced reception counts is the complete reference month. The reference date for all other figures is the first day of the reference month. However, not all states and territories report strictly according to this 'first day of the month' rule:

- The Western Australian and Australian Capital Territory prisoners in New South Wales prisons populations are counted as at midnight on the last day of the month. In these cases the figures provided are taken to represent the prison population at the beginning of the following month.

5 Calculation of figures for the entire quarter and entire year varies depending on the counting unit and method of counting prisoners:

- Average daily figures: Figures are calculated by weighting the average according to the number of days in each month, quarter or year.
- First day of the month: Figures are simple averages. For quarterly figures, the sum of the monthly data is divided by three; for yearly figures, the figures for each month are added and the total divided by twelve.
- Sentenced receptions: Figures are totals of each month.
- These figures may be subject to rounding.

SCOPE

6 The scope of the statistics in this publication includes all persons remanded or sentenced to adult custodial facilities (including Work Outreach Camps and Community Custody Centres in Queensland), or who are serving adult community-based orders in each state and territory in Australia.

EXPLANATORY NOTES *continued*

SCOPE *continued*

7 Counts of prisoners in the following custodial facilities are included in the collection:

- gazetted prisons in all jurisdictions;
- periodic detention centres in New South Wales and the Australian Capital Territory;
- community custody centres and work outreach camps in Queensland;
- cells in court complexes administered by corrective services in New South Wales;
- transitional centres in New South Wales; and
- lock-ups in Western Australia operated by the police but designated as a prison by the Chief Executive Officer of Corrective Services.

8 The prisons and community corrections collection excludes the following custodial facilities:

- police lockups, police prisons and cells in court complexes not administered and controlled by corrective services;
- gazetted police prisons in the Northern Territory;
- juvenile detention centres, including those under the authority of adult corrective services;
- immigration detention centres; and
- military prisons.

9 This collection includes counts of persons remanded or sentenced to adult custody facilities, or directed to serve community based orders administered by adult corrective services agencies. In all states and territories except Queensland, persons are considered adults if aged 18 years and over. In Queensland persons are considered adults if aged 17 years and over. The vast majority of persons counted in the collection are adults. However, juveniles may be included in exceptional circumstances.

10 Since December 2004, the Kariong Juvenile Correctional Centre in New South Wales has operated under the authority of adult corrective services. The population at Kariong Juvenile Correctional Centre may include adult persons as well as juveniles. New South Wales includes juveniles based in Kariong in this collection, however, this facility accounts for less than 0.5% of the New South Wales prisoner population.

11 Federal prisoners include those persons charged and sentenced under a Commonwealth statute, and those persons who are charged and sentenced under the laws of another country but transferred to an Australian prison to serve their sentence under the *International Transfer of Prisoners Act 1997* (Cwlth). To give practical effect to this legislation in Australia, the framework was introduced in January 2003. For the purposes of this publication, federal sentenced prisoners are those persons who are recognised by the Criminal Law Division of the Australian Government Attorney-General's Department as having been charged and sentenced under a Commonwealth statute, or transferred from another country to serve their sentence in Australia.

12 With the exception of Victoria and Tasmania, community-based corrections includes those persons with breached or suspended orders.

DATA SOURCE

13 Statistics in this publication are derived from information provided to the ABS from administrative records held by corrective services agencies within each state and territory. Statistics on federal prisoners are derived from records kept by the Criminal Law Division of the Australian Government Attorney-General's Department.

COUNTING RULES

14 Statistics for persons held in custody are presented by the state or territory in which they were held and therefore may not be the sentencing jurisdiction. The only exception to this are data for federal sentenced prisoners. These are presented by the state or territory in which they were sentenced, not where they were held in custody.

EXPLANATORY NOTES *continued*

COUNTING RULES *continued*

15 Sentenced prisoners who have other offences that are unsentenced are counted as sentenced. Prisoners may be unsentenced because they are awaiting the outcome of their trial, convicted but awaiting sentence, or awaiting deportation.

16 If an offender has two or more different types of community-based orders operating simultaneously, then each order will be counted. If two or more community-based orders are of the same type, these orders together will only be counted as one order.

RATES

17 Imprisonment and community-based corrections rates enable comparisons of prisoner numbers to be made across states and territories. Prisoner and community-based corrections rates are expressed per 100,000 adult population. Imprisonment rates are calculated based on two different counting concepts (average daily and first day of the month), as a result there may be variations in imprisonment rates presented in this publication.

18 In this publication the population figures used in the calculation of rates are for persons aged 18 years and over for all states and territories except Queensland where the population is persons aged 17 years and over (see paragraph 9).

19 Rates for the total adult prisoner population and persons in community-based corrections are calculated using the estimated resident population (ERP) for each of the states and territories. All estimates for the Australian Capital Territory exclude Jervis Bay Territory. All estimates for Australia exclude the external territories of Christmas Island and the Cocos (Keeling) Island. As the population changes over time the denominator used for the calculation of rates varies, depending on the reference period. The most current ERP data available at the time of publication are used to calculate rates as follows:

- for the March quarter, ERP is from the previous September quarter;
- for the June quarter, ERP is from the previous December quarter;
- for the September quarter, ERP is from the previous March quarter;
- for the December quarter, ERP is from the previous June quarter; and
- annual rates are an average of the rates of the contributing quarters.

20 The ERP series are revised every five years to incorporate additional information available from the latest Census of Population and Housing. The rates per 100,000 adult persons presented in this issue have been calculated using different ERP counts as follows:

- Rates from the June 2007 quarter (excluding Aboriginal and Torres Strait Islander rates) are calculated using rebased data from the intercensal period (2001-2006) sourced from the 2006 Census of Population and Housing;
- All other rates (excluding Aboriginal and Torres Strait Islander rates) are calculated using ERP data based on the 2001 Census of Population and Housing.

21 For population estimates and information on the methodology used to produce the ERP, see *Australian Demographic Statistics* (cat. no. 3101.0).

Aboriginal and Torres Strait Islander imprisonment rates

22 Rates for the Aboriginal and Torres Strait Islander adult population are calculated using rebased estimates (for the period 1986 - 2006) and projections (2007 - 2021) of the Aboriginal and Torres Strait Islander population. These data are based on data from the 2006 Census of Population and Housing and use assumptions about future fertility, paternity, life expectancy at birth and migration. For more information see *Experimental Estimates and Projections, Aboriginal and Torres Strait Islander Australians, 1991 to 2021* (cat. no. 3238.0).

EXPLANATORY NOTES *continued*

*Aboriginal and Torres Strait
Islander imprisonment rates
continued*

23 The projections used in this publication are based on Series B projections for 30 June of the relevant calendar year. Series B is one of two main projection series (Series A and B) that have been published for the years 2007 to 2021. Both of these series assume an annual decline of 0.5% in fertility rates; an annual increase of 1% in paternity rates; constant interstate migration at levels observed in the 2006 Census; and zero net overseas migration with no arrivals and no departures. Further, two different assumptions were made about future Aboriginal and Torres Strait Islander life expectancy at birth for Australia:

- In Series A, Aboriginal and Torres Strait Islander life expectancy at birth will remain constant; and
- In Series B, Aboriginal and Torres Strait Islander life expectancy at birth will increase by 0.3 years per year for both males and females.

24 The impact of re-basing Aboriginal and Torres Strait Islander imprisonment rate data using Series B projections, instead of the previous "low series" of projections, is minimal at the national level. Differences of no greater than 5% are seen in the state and territory data, and generally the result has been a decrease in the imprisonment rate. This is because the assumptions used by Series B result in higher population estimates and projections than those through the use of the previous "low series".

25 The decision to use Series B as the denominator in the calculation of Aboriginal and Torres Strait Islander imprisonment rates followed consultation with the National Corrective Services Statistics Advisory Group and other stakeholders.

ABORIGINAL AND TORRES
STRAIT ISLANDER
IDENTIFICATION

26 The ABS conducts an ongoing programme of quality assurance to monitor and improve the quality of Aboriginal and Torres Strait Islander Status data in Corrective Services agencies (both custodial and community-based corrections). Whilst the ABS has published Aboriginal and Torres Strait Islander status data in Corrective Services collections for a number of years, quality assurance is required to better understand the level of accuracy over time

27 The quality of the Aboriginal and Torres Strait Islander status information collected and recorded in Corrective Services agencies is assessed against the ABS Standard Indigenous Question (SIQ). The SIQ is based upon self-identification by the individual who comes into contact with Corrective Services agencies. The quality of Aboriginal and Torres Strait Islander data is being reviewed in 2010 and 2011.

28 Some persons in custody are recorded with an unknown Aboriginal and Torres Strait Islander status on the information systems of corrective agencies as their status has not been able to be obtained. Persons with Aboriginal and Torres Strait Islander status unknown are excluded from tables 13 -16. Counts of persons with an unknown Aboriginal and Torres Strait Islander status are included in all other tables. Unknowns account for just over 2% of all records.

SIGNIFICANT EVENTS
New South Wales

29 In March 2008, the administrative classification of the Wellington Correctional Centre was altered. The classification was changed from 'open' to 'secure' for 75% of the facility to reflect the change in the profile of inmates held. As such, the proportion of persons in secure and open custody altered in the March quarter 2008 compared to previous quarters.

Queensland

30 Quality assurance conducted in Queensland during the June quarter 2009 had resulted in a revision of the number of offenders under community based corrections during January, February and March 2009.

31 Quality assurance work conducted in Queensland during the September quarter 2007 resulted in the identification and elimination of duplicate and other records for the month of July 2007. Caution should be exercised when comparing data prior to the September quarter 2007.

EXPLANATORY NOTES *continued*

South Australia

32 Data on community-based correction orders extracted from the South Australian information system from the June quarter 2005 may be subject to data processing time lags.

Western Australia

33 Prior to the September quarter 2009, Western Australian data on type of custody are not comparable. Data prior to this period were based on a prisoner's security rating rather than the rating of the prison (see Glossary). As a result, prisoners with a minimum security rating and located in a medium or maximum security prison were classified as open custody. Data for prisoners in secure custody are understated, whilst data for persons in open custody are overstated prior to September quarter 2009.

34 The large increase in prisoners from early 2009 was due to fewer offenders being granted parole by the Prisoner Review Board, increased incarcerations by the courts and the impact of the Truth in Sentencing legislation. Implemented on 23 September 2008, the Truth in Sentencing legislation refers to the Sentencing Act (WA) 1995, Transitional Provisions which removes the automatic 1/3 discount for each and every offence that appears in WA Statute books.

35 Data for community-based correction orders extracted from the Western Australian information system are subject to data processing time lags of 4-6 weeks. Fine option orders are most likely to be impacted by the lag, with approximately 10% of each month's data entry delayed.

Tasmania

36 Tasmania trialled new orders for bail, suspended sentences and drug treatment as part of the Court Mandated Diversion program (CMD) from 1 July 2007 to 30 June 2008. Counts for supervision (compliance) - bail orders during the September quarter 2008 represent the transitional period concluding this trial. These orders are now being handled by alternative service providers and are therefore no longer included.

Northern Territory

37 In September 2009 a new offender management system was implemented– the Integrated Offender Management System (IOMS). Caution should be exercised in comparing December 2009 data with previous quarters as the new system resulted in significant increased counts for sentenced receptions and some community-based orders. Bail counts for December quarter 2009 were also unable to be supplied, impacting the territory totals for community based orders and to a lesser extent on the Australian total.

Australian Capital Territory

38 From the September quarter 2009, all ACT sentenced and unsentenced prisoners are held within the ACT. From the June quarter 2009 all sentenced prisoner receptions were detained within the Australian Capital Territory. For this same period nearly all ACT prisoners held in New South Wales prisons were transferred to a new custodial facility (Alexander Maconochie Centre) which commenced taking prisoners in March 2009. This prison is a secure facility. Between 2000 and March quarter 2009, persons sentenced to full-time custody by the Australian Capital Territory were usually held in New South Wales prisons as the Australian Capital Territory only had two remand centres for unsentenced prisoners and a periodic detention centre. Unsentenced Australian Capital Territory prisoners may have also been detained in New South Wales prisons. The exception was for persons sentenced for fine default; these prisoners were detained in Australian Capital Territory remand.

39 A backlog of prisoners sentenced in the ACT awaiting transfer to NSW remained in the ACT during the transition of the opening of the new ACT prison. These sentenced prisoners were classified as 'unsentenced' prior to the December quarter 2009. With the opening of the new prison, sentenced reception counts better reflect accurate recording of sentenced and unsentenced prisoners, resulting in an increase in sentenced prisoner receptions from the September quarter 2009.

EXPLANATORY NOTES *continued*

*Australian Capital Territory
continued*

40 To provide a greater understanding of the number of prisoners attributed to the Australian Capital Territory, while presenting an accurate picture of the New South Wales prisoner population, statistics relating to Australian Capital Territory prisoners held in New South Wales prisons prior to the June quarter 2009 were presented as a subset of the New South Wales figures in editions of this publication prior to the June quarter 2010 release.

41 The decline in supervision bail compliance orders in December 2008 may have been partly influenced by data quality checks. Records with no completion or expiry date that should have been finalised on the system were marked as completed during this period.

42 Imprisonment rate data for the Australian Capital Territory are calculated on the basis of the total number of Australian Capital Territory prisoners (i.e. Australian Capital Territory prisoners that were held in New South Wales prisons, prior to September quarter 2009, and Australian Capital Territory prisoners held in the Australian Capital Territory) divided by the estimated resident Australian Capital Territory adult population and multiplied by 100,000. For New South Wales, the imprisonment rate is based on the count of New South Wales prisoners, excluding Australian Capital Territory prisoners held in New South Wales prisons prior to September quarter 2009, divided by the estimated resident New South Wales adult population and multiplied by 100,000. Time series data have also been derived on this basis.

REVISIONS

43 Type of custody data have been revised for Western Australia and the Australian Capital Territory in this edition. In previous editions of this publication, data for persons in secure and open custody were extracted according to the prisoner's security rating, rather than the rating of the prison as per the standard definition (see Glossary). As a result, prisoners with a minimum security rating and located in a medium or maximum security prison were classified to open custody.

44 From this edition onwards both Western Australian and the Australian Capital Territory are supplying data on type of custody as per the standard definition. Data on prisoners in secure and open custody in tables 6 and 7 have been revised to reflect the standard definition. For Western Australia, the revisions have been applied to the period from September quarter 2009 to June quarter 2010; data prior to this are based on a security rating of the prisoner. For the Australian Capital Territory, the revisions have been applied from June quarter 2009 to June quarter 2010; all data are now based on the security rating of the prison.

45 Northern Territory Community Based Corrections data have been revised for the period from December quarter 2009 to June quarter 2010 due to double counting in the compilation of the data for these periods for some order types. Tables impacted are 1, 17-19 and Appendices A1-A2.

EXPLANATORY NOTES *continued*

RELATED PUBLICATIONS

ABS Publications

- 46** Other ABS publications that may be of interest include:
- Australian Demographic Statistics* (cat. no. 3101.0) – issued quarterly
 - Australian Social Trends* (cat. no. 4102.0) – issued quarterly
 - Australian Standard Offence Classification (second edition)* (cat. no. 1234.0) – released 1 August 2008
 - Crime Victimization, Australia* (cat. no. 4530.0) – issued annually
 - Criminal Courts, Australia* (cat. no. 4513.0) – issued annually
 - Experimental Estimates and Projections, Aboriginal and Torres Strait Islander Australians, 1991 to 2021* (cat. no. 3238.0) – released 8 September 2009
 - General Social Survey: Summary Results, Australia* (cat. no. 4159.0) – irregular
 - Information Paper: Measuring Crime Victimization, Australia: The Impact of Different Collection Methodologies* (cat. no. 4522.0.55.001) – single issue
 - Information Paper: National Criminal Justice Statistical Framework* (cat. no. 4525.0) – single issue
 - Information Paper: National Information Development Plan for Crime and Justice Statistics 2005* (cat. no. 4520.0) – single issue
 - Measures of Australia's Progress* (cat. no. 1370.0) – released 15 September 2010
 - Personal Fraud Survey* (cat. no. 4528.0) – released 27 June 2008
 - Personal Safety Survey* (cat. no. 4906.0) – released 21 August 2006
 - Prisoners in Australia* (cat. no. 4517.0) – issued annually
 - Recorded Crime – Victims, Australia* (cat. no. 4510.0) – issued annually
 - Recorded Crime – Offenders, Selected states and territories* (cat. no. 4519.0) – issued annually
 - Sexual Assault in Australia: A Statistical Overview* (cat. no. 4523.0) – single issue

47 Current publications and other products released by the ABS are available from the ABS website <<http://www.abs.gov.au>>. The ABS also issues a daily Release Advice on the website that details products to be released in the week ahead. The National Centre for Crime and Justice Statistics releases *Crime and Justice News* (cat. no. 4500.0), an annual newsletter that is published on the ABS website. The Centre can be contacted by email through <crime.justice@abs.gov.au>.

Non-ABS Publications

- 48** Non-ABS sources that may be of interest include:
- Australian Institute of Criminology, *List of Publications* – irregular
<<http://www.aic.gov.au>>
 - Crime Research Centre, University of Western Australia, *Crime and Justice Statistics for Western Australia* – issued annually
<<http://www.crc.law.uwa.edu.au>>
 - Department of Corrective Services, New South Wales, *NSW Inmate Census* – irregular
<<http://www.dcs.nsw.gov.au>>
 - Department of Justice, Northern Territory, *Northern Territory Quarterly Crime and Justice Statistics* – issued quarterly
<<http://www.nt.gov.au/justice/>>
 - Department of Justice, Victoria, *Statistical Profile of the Victorian Prison System* – issued annually
<<http://www.justice.vic.gov.au>>
 - NSW Bureau of Crime Statistics and Research, *New South Wales Criminal Courts Statistics* – issued annually
<<http://www.lawlink.nsw.gov.au>>
 - Office of Crime Statistics and Research, *South Australia, Crime and Justice in South Australia* – issued annually
<<http://www.ocsar.sa.gov.au>>

EXPLANATORY NOTES *continued*

Non-ABS Publications
continued

Steering Committee for the Review of Commonwealth/State Service Provision,
Report on Government Services – issued annually
<<http://www.pc.gov.au>>

APPENDIX EXPERIMENTAL COMMUNITY-BASED CORRECTIONS DATA

INTRODUCTION

This appendix presents experimental data for Aboriginal and Torres Strait Islander persons in community-based corrections. Data are presented as the number of Indigenous persons on community-based corrections orders on the first day of the month.

As Aboriginal and Torres Strait Islander Status data for persons under the supervision of Community-Based Corrections are still experimental, care should be taken when referring to this data. The quality of Aboriginal and Torres Strait Islander data is being reviewed in 2010–11.

APPENDIX EXPERIMENTAL COMMUNITY-BASED CORRECTIONS DATA

continued

A1 PERSONS IN COMMUNITY-BASED CORRECTIONS(a)(b), By Aboriginal and Torres Strait Islander status

	NSW	Vic.	Qld	SA(c)	WA(d)	Tas.	NT(e)	ACT	Aust.(f)
ABORIGINAL AND TORRES STRAIT ISLANDER (NUMBER ON FIRST DAY OF MONTH)									
2007	3 198	341	2 267	816	1 643	137	880	100	9 380
2008	3 178	353	2 556	928	1 815	132	847	125	9 935
2009	3 169	439	2 823	1 001	1 949	161	r860	153	r10 555
2009									
Sep Qtr	3 143	479	2 856	990	1 980	163	908	151	10 670
Dec Qtr	3 195	479	3 014	1 018	1 861	173	r788	154	r10 682
2010									
Mar Qtr	3 132	485	3 095	1 028	1 794	171	r825	144	r10 674
Jun Qtr	3 033	507	3 202	1 026	1 750	191	r833	149	r10 691
Sep Qtr	3 146	522	3 297	1 039	1 653	195	834	148	10 833
Jul	3 128	508	3 297	1 046	1 675	191	827	145	10 817
Aug	3 156	532	3 295	1 028	1 632	194	835	146	10 818
Sep	3 154	526	3 298	1 044	1 652	199	839	152	10 864
NON-INDIGENOUS (NUMBER ON FIRST DAY OF MONTH)									
2007	13 843	6 707	10 317	4 809	3 580	970	291	959	41 476
2008	13 793	6 946	11 564	4 919	3 715	970	252	1 075	43 234
2009	13 119	7 220	11 785	4 956	3 626	1 067	r258	1 166	r43 197
2009									
Sep Qtr	12 851	7 863	11 886	4 953	3 570	1 089	258	1 153	43 624
Dec Qtr	12 792	8 127	12 008	4 840	3 612	1 123	r297	1 159	r43 958
2010									
Mar Qtr	12 472	8 174	11 940	4 678	3 524	1 147	r322	1 166	r43 423
Jun Qtr	12 066	8 130	12 186	4 630	3 460	1 247	r323	1 193	r43 235
Sep Qtr	12 257	8 375	12 417	4 650	3 309	1 285	342	1 197	43 832
Jul	12 231	8 212	12 416	4 633	3 366	1 269	345	1 202	43 674
Aug	12 354	8 349	12 372	4 630	3 316	1 268	338	1 208	43 835
Sep	12 187	8 563	12 464	4 687	3 244	1 317	343	1 182	43 987
UNKNOWN (NUMBER ON FIRST DAY OF MONTH)									
2007	962	662	—	46	6	52	2	79	1 809
2008	983	651	—	41	15	41	1	101	1 833
2009	1 849	820	—	64	20	44	r1	75	r2 873
2009									
Sep Qtr	1 972	343	—	65	35	40	1	82	2 538
Dec Qtr	2 044	363	—	76	16	59	r—	98	r2 656
2010									
Mar Qtr	1 997	353	—	55	22	73	r—	113	r2 613
Jun Qtr	2 029	471	—	60	6	39	r—	111	r2 716
Sep Qtr	1 146	542	—	41	4	30	—	118	1 881
Jul	1 348	576	—	40	3	29	—	111	2 107
Aug	1 121	560	—	44	3	29	—	118	1 875
Sep	968	489	—	40	6	32	—	125	1 660

— nil or rounded to zero (including null cells)

r revised

(a) Figures include persons with breached or suspended orders, with the exception of Vic. and Tas.

(b) Figures for the quarter and year for first day of the month counts are calculated as a simple average – see Explanatory Notes, paragraph 5.

(c) Data movements may be influenced by data entry delays – see Explanatory Notes, paragraph 32.

(d) Data is subject to processing delays of 4 to 6 weeks – see Explanatory Notes, paragraph 35.

(e) Excludes bail data for the December quarter 2009 – see Explanatory Notes paragraph 37.

(f) See footnotes c-e.

APPENDIX EXPERIMENTAL COMMUNITY-BASED CORRECTIONS DATA

continued

A1 PERSONS IN COMMUNITY-BASED CORRECTIONS(a)(b), By Aboriginal and Torres Strait Islander status *continued*

	NSW	Vic.	Qld	SA(c)	WA(d)	Tas.	NT(e)	ACT	Aust.(f)
PERSONS (NUMBER ON FIRST DAY OF MONTH)									
2007	18 002	7 710	12 584	5 671	5 229	1 159	1 173	1 138	52 665
2008	17 954	7 950	14 120	5 888	5 545	1 143	1 100	1 301	55 001
2009	18 137	8 479	14 608	6 021	5 595	1 272	r1 119	1 394	r56 625
2009									
Sep Qtr	17 966	8 685	14 742	6 008	5 585	1 291	1 167	1 387	56 832
Dec Qtr	18 032	8 969	15 023	5 934	5 488	1 355	r1 085	1 410	r57 296
2010									
Mar Qtr	17 602	9 012	15 035	5 761	5 339	1 391	r1 147	1 423	r56 710
Jun Qtr	17 127	9 108	15 388	5 715	5 217	1 478	r1 156	1 452	r56 641
Sep Qtr	16 549	9 438	15 714	5 731	4 966	1 509	1 176	1 463	56 546
Jul	16 707	9 296	15 713	5 719	5 044	1 489	1 172	1 458	56 598
Aug	16 631	9 441	15 667	5 702	4 951	1 491	1 173	1 472	56 528
Sep	16 309	9 578	15 762	5 771	4 902	1 548	1 182	1 459	56 511

r revised

(a) Figures include persons with breached or suspended orders, with the exception of Vic. and Tas.

(b) Figures for the quarter and year for first day of the month counts are calculated as a simple average – see Explanatory Notes, paragraph 5.

(c) Data movements may be influenced by data entry delays – see Explanatory Notes, paragraph 32.

(d) Data is subject to processing delays of 4 to 6 weeks – see Explanatory Notes, paragraph 35.

(e) Excludes bail data for the December quarter 2009 – see Explanatory Notes paragraph 37.

(f) See footnotes c-e.

APPENDIX EXPERIMENTAL COMMUNITY-BASED CORRECTIONS DATA

continued

A2 PROPORTION OF PERSONS IN COMMUNITY-BASED CORRECTIONS(a)(b), By Aboriginal and Torres Strait Islander status

	NSW	Vic.	Qld	SA(c)	WA(d)	Tas.	NT(e)	ACT	Aust.(f)
ABORIGINAL AND TORRES STRAIT ISLANDER (%)									
2007	17.8	4.4	18.0	14.4	31.4	11.8	75.0	8.8	17.8
2008	17.7	4.4	18.1	15.8	32.7	11.5	77.0	9.6	18.1
2009	17.5	5.2	19.3	16.6	34.8	12.7	r76.9	11.0	r18.6
2009									
Sep Qtr	17.5	5.5	19.4	16.5	35.5	12.6	77.8	10.9	18.8
Dec Qtr	17.7	5.3	20.1	17.2	33.9	12.8	r72.6	10.9	r18.6
2010									
Mar Qtr	17.8	5.4	20.6	17.8	33.6	12.3	r71.9	10.1	18.8
Jun Qtr	17.7	5.6	20.8	17.9	33.6	12.9	r72.1	10.2	18.9
Sep Qtr	19.0	5.5	21.0	18.1	33.3	12.9	70.9	10.1	19.2
Jul	18.7	5.5	21.0	18.3	33.2	12.8	70.6	9.9	19.1
Aug	19.0	5.6	21.0	18.0	33.0	13.0	71.2	9.9	19.1
Sep	19.3	5.5	20.9	18.1	33.7	12.9	71.0	10.4	19.2
NON-INDIGENOUS (%)									
2007	76.9	87.0	82.0	84.8	68.5	83.7	24.8	84.3	78.8
2008	76.8	87.4	81.9	83.5	67.0	84.9	22.9	82.6	78.6
2009	72.3	85.2	80.7	82.3	64.8	83.9	r23.1	83.7	76.3
2009									
Sep Qtr	71.5	90.5	80.6	82.4	63.9	84.3	22.1	83.1	76.8
Dec Qtr	70.9	90.6	79.9	81.6	65.8	82.9	r27.4	82.2	r76.7
2010									
Mar Qtr	70.9	90.7	79.4	81.2	66.0	82.4	r28.1	81.9	76.6
Jun Qtr	70.4	89.3	79.2	81.0	66.3	84.4	r27.9	82.1	76.3
Sep Qtr	74.1	88.7	79.0	81.1	66.6	85.1	29.1	81.8	77.5
Jul	73.2	88.3	79.0	81.0	66.7	85.2	29.4	82.4	77.2
Aug	74.3	88.4	79.0	81.2	67.0	85.0	28.8	82.1	77.5
Sep	74.7	89.4	79.1	81.2	66.2	85.1	29.0	81.0	77.8
UNKNOWN (%)									
2007	5.3	8.6	—	0.8	0.1	4.5	0.1	6.9	3.4
2008	5.5	8.2	—	0.7	0.3	3.6	0.1	7.7	3.3
2009	10.2	9.7	—	1.1	0.4	3.4	r0.1	5.3	5.1
2009									
Sep Qtr	11.0	3.9	—	1.1	0.6	3.1	0.1	5.9	4.5
Dec Qtr	11.3	4.0	—	1.3	0.3	4.4	r—	6.9	r4.6
2010									
Mar Qtr	11.3	3.9	—	0.9	0.4	5.3	—	8.0	4.6
Jun Qtr	11.8	5.2	—	1.0	0.1	2.7	—	7.6	4.8
Sep Qtr	6.9	5.7	—	0.7	0.1	2.0	—	8.1	3.3
Jul	8.1	6.2	—	0.7	0.1	1.9	—	7.6	3.7
Aug	6.7	5.9	—	0.8	0.1	1.9	—	8.0	3.3
Sep	5.9	5.1	—	0.7	0.1	2.1	—	8.6	2.9

— nil or rounded to zero (including null cells)

r revised

(a) Figures include persons with breached or suspended orders, with the exception of Vic. and Tas.

(b) Figures for the quarter and year for first day of the month counts are calculated as a simple average – see Explanatory Notes, paragraph 5.

(c) Data movements may be influenced by data entry delays – see Explanatory Notes, paragraph 32.

(d) Data is subject to processing delays of 4 to 6 weeks – see Explanatory Notes, paragraph 35.

(e) Excludes bail data for the December quarter 2009 – see Explanatory Notes paragraph 37.

(f) See footnotes c-e.

GLOSSARY

Aboriginal and Torres Strait Islander prisoner	A prisoner who self-identifies as being of Aboriginal or Torres Strait Islander origin, or both.
Bail	This is generally a pre-sentence option where a person is released into the community for a period before they appear in court for trial or final sentencing. Bail orders can require a financial surety to be lodged with the court, and a number of conditions including supervision and residential requirements designed to ensure the re-appearance of the person at court. Bail counts are available only in states and territories where bail orders are supervised by corrective services. Bail is a sub-category of Supervision where the person is under the supervision of corrective services (<i>see</i> Supervision).
Community-based corrections	This refers to the community-based management of court-ordered sanctions, post-prison administrative arrangements and fine conversions, which principally involve the provision of one or more of the following activities: supervision, programs or community work.
Community service	This category of community-based corrections orders includes sentencing options requiring offenders to undertake a specified number of hours of unpaid, supervised work to benefit the community on an approved project. Community service is a sub-category of Reparation (<i>see</i> Reparation).
Corrective services custody	Confinement in a place intended primarily for the purpose of confining prisoners, such as a prison, prison farm, Periodic Detention Centre or Community Custody Centre.
Federal sentenced prisoner	Persons charged and sentenced under a Commonwealth statute or transferred from another country to serve their sentence in Australia.
Fine option	A community-based sentence type where the offender is serving a sentence for default of a fine. In most jurisdictions this order type requires an offender to complete community service as a reparatory act. Fine option is a sub-category of Reparation (<i>see</i> Reparation).
Full-time prison custody	A type of custody where a prisoner is required to be held in custody on a full-time basis. This includes prisons, Queensland Community Custody Centres and work outreach camps. Full-time prison custody excludes periodic detention (<i>see</i> Periodic detention).
Home detention	(<i>see</i> Restricted movement)
Legal status	A person may be either sentenced or unsentenced depending on the warrant(s) or court order(s) that provide the legal basis for the administration of the person through the criminal justice system.
Non-Indigenous	A prisoner who does not identify as being of Aboriginal and/or Torres Strait Islander origin.
Open custody	Refers to prisoners housed in minimum security custodial facilities that do not require them to be confined by a secure perimeter physical barrier, irrespective of whether a physical barrier exists.
Parole	A parole order is made following a period of imprisonment and requires an offender to be subject to supervision in the community. Additional conditions may also be applied such as programs, counselling or drug testing. Parole is a sub-category of Supervision (<i>see</i> Supervision).
Periodic detention	A type of custody or order where a sentenced prisoner is required to be held in custody on a part-time basis. Currently this consists of two consecutive days in a one-week period, while remaining at liberty during the rest of the week.
Prisoner	A person held in custody. For the purposes of this collection, prisoners are those whose confinement is the responsibility of a corrective services agency.
Remand	(<i>see</i> Unsented)

GLOSSARY *continued*

Reparation	Reparation refers to all offenders with an order that requires them to undertake unpaid, justice agency-approved community service work.
Restricted movement	This refers to persons who are subject to a system of restricted movement, including supervision and/or electronic monitoring. This category includes home detention that may restrict residence to a nominated place. Restricted movement can be either a pre-sentence or post-sentence order.
Secure custody	Refers to prisoners housed in medium or maximum security custodial facilities requiring them to be confined by a secure physical barrier.
Sentenced	A legal status indicating that a person has received a custodial or community-based order from a court in response to a conviction for an offence.
Sentenced prisoner reception	Refers to entry into corrective services custody from the community, having received a sentence of imprisonment as an outcome of a court proceeding; or persons who are sentenced to custody while in custody on remand (i.e. changed status from a remand to a sentenced prisoner); or persons entering custody as a result of defaulting on the payment of a fine. Sentenced prisoners in custody who receive a further sentence of imprisonment are not counted as sentenced receptions.
Sentenced probation	A supervision order made following an original sentence handed down in court following conviction. A probation order generally requires 'good behaviour' and compliance with the directions of supervisors. The order may also require compliance with conditions such as program attendance and residential requirements.
Supervision (compliance)	This includes community-based orders other than those categorised as restricted movement or reparation (e.g. parole, bail and sentenced probation).
Unsentenced	A legal status indicating that a person is confined to custody or supervision while awaiting the outcome of their trial.

FOR MORE INFORMATION . . .

INTERNET **www.abs.gov.au** the ABS website is the best place for data from our publications and information about the ABS.

INFORMATION AND REFERRAL SERVICE

Our consultants can help you access the full range of information published by the ABS that is available free of charge from our website. Information tailored to your needs can also be requested as a 'user pays' service. Specialists are on hand to help you with analytical or methodological advice.

PHONE 1300 135 070

EMAIL client.services@abs.gov.au

FAX 1300 135 211

POST Client Services, ABS, GPO Box 796, Sydney NSW 2001

FREE ACCESS TO STATISTICS

All statistics on the ABS website can be downloaded free of charge.

WEB ADDRESS www.abs.gov.au